

Product datasheet for **TA379792**

Pebp4 Rabbit Polyclonal Antibody

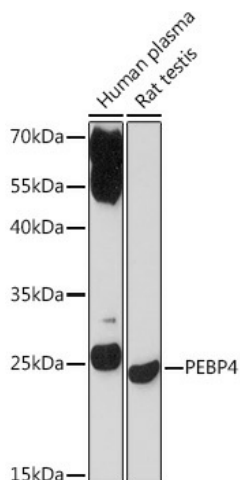
Product data:

Product Type:	Primary Antibodies
Applications:	ICC/IF, IHC, WB
Recommended Dilution:	WB,1:500 - 1:2000 IHC,1:50 - 1:200 IF,1:50 - 1:200
Reactivity:	Human, Mouse, Rat
Host:	Rabbit
Isotype:	IgG
Clonality:	Polyclonal
Immunogen:	Recombinant protein of human PEBP4.
Formulation:	Buffer: PBS with 0.02% sodium azide,50% glycerol,pH7.3.
Concentration:	lot specific
Purification:	Affinity purification
Conjugation:	Unconjugated
Storage:	Store at -20°C. Avoid freeze / thaw cycles.
Stability:	Shelf life: one year from despatch.
Gene Name:	phosphatidylethanolamine binding protein 4
Database Link:	Entrez Gene 73523 Mouse Q9D9G2
Background:	Promotes AKT phosphorylation, suggesting a possible role in the PI3K-AKT signaling pathway.
Synonyms:	CORK-1; CORK1; GWTM1933; hPEBP4; MGC22776; PEBP-4; PRO4408

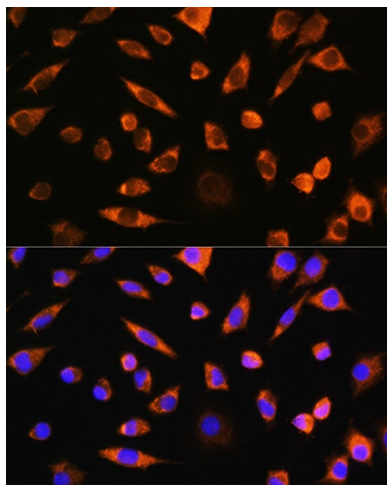


[View online »](#)

Product images:



Western blot analysis of extracts of various cell lines, using PEBP4 Rabbit pAb (TA379792) at 1:1000 dilution. | Secondary antibody: HRP Goat Anti-Rabbit IgG (H+L) at 1:10000 dilution. | Lysates/proteins: 25ug per lane. | Blocking buffer: 3% nonfat dry milk in TBST. | Detection: ECL Basic Kit . | Exposure time: 3min.



Immunofluorescence analysis of L929 cells using PEBP4 Rabbit pAb (TA379792) at dilution of 1:100. Blue: DAPI for nuclear staining.