

## Product datasheet for **TA379790**

### PEA15 Rabbit Polyclonal Antibody

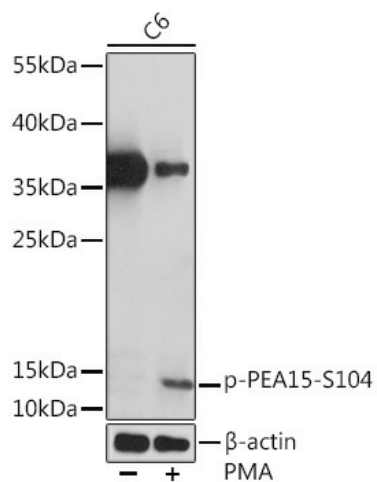
#### Product data:

Product Type:	Primary Antibodies
Applications:	IHC, WB
Recommended Dilution:	WB,1:500 - 1:2000 IHC,1:50 - 1:100
Reactivity:	Human, Mouse, Rat
Modifications:	Phospho S104
Host:	Rabbit
Isotype:	IgG
Clonality:	Polyclonal
Immunogen:	A synthetic phosphorylated peptide around S104 of human PEA15 (NP_003759.1).
Formulation:	Buffer: PBS with 0.02% sodium azide,50% glycerol,pH7.3.
Concentration:	lot specific
Purification:	Affinity purification
Conjugation:	Unconjugated
Storage:	Store at -20°C. Avoid freeze / thaw cycles.
Stability:	Shelf life: one year from despatch.
Predicted Protein Size:	15kDa/17kDa
Gene Name:	phosphoprotein enriched in astrocytes 15
Database Link:	<a href="#">Entrez Gene 8682 Human Q15121</a>
Background:	This gene encodes a death effector domain-containing protein that functions as a negative regulator of apoptosis. The encoded protein is an endogenous substrate for protein kinase C. This protein is also overexpressed in type 2 diabetes mellitus, where it may contribute to insulin resistance in glucose uptake. Alternative splicing results in multiple transcript variants.
Synonyms:	HMAT1; HUMMAT1H; MAT1; MAT1H; PEA-15; PED



[View online »](#)

## Product images:



Western blot analysis of extracts of various cell lines, using Phospho-PEA15-S104 Rabbit pAb (TA379790) at 1:1000 dilution. C6 cells were treated by PMA/TPA (200 nM) at 37°C for 30 minutes after serum-starvation overnight. | Secondary antibody: HRP Goat Anti-Rabbit IgG (H+L) at 1:10000 dilution. | Lysates/proteins: 25ug per lane. | Blocking buffer: 3% BSA. | Detection: ECL Enhanced Kit. | Exposure time: 90s.