

Product datasheet for **TA379789S**

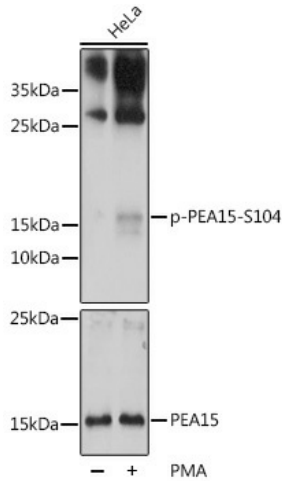
PEA15 Rabbit Polyclonal Antibody

Product data:

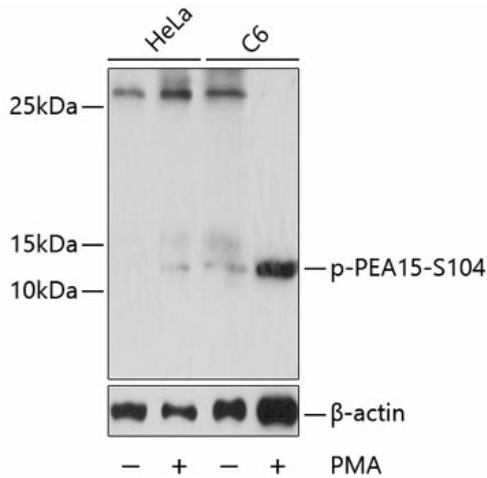
Product Type:	Primary Antibodies
Applications:	WB
Recommended Dilution:	WB,1:500 - 1:2000
Reactivity:	Human, Mouse, Rat
Modifications:	Phospho S104
Host:	Rabbit
Isotype:	IgG
Clonality:	Polyclonal
Immunogen:	A synthetic phosphorylated peptide around S104 of human PEA15 (NP_003759.1).
Formulation:	Buffer: PBS with 0.02% sodium azide,50% glycerol,pH7.3.
Concentration:	lot specific
Purification:	Affinity purification
Conjugation:	Unconjugated
Storage:	Store at -20°C. Avoid freeze / thaw cycles.
Stability:	Shelf life: one year from despatch.
Predicted Protein Size:	15kDa/17kDa
Gene Name:	phosphoprotein enriched in astrocytes 15
Database Link:	Entrez Gene 8682 Human Q15121
Background:	This gene encodes a death effector domain-containing protein that functions as a negative regulator of apoptosis. The encoded protein is an endogenous substrate for protein kinase C. This protein is also overexpressed in type 2 diabetes mellitus, where it may contribute to insulin resistance in glucose uptake. Alternative splicing results in multiple transcript variants.
Synonyms:	HMAT1; HUMMAT1H; MAT1; MAT1H; PEA-15; PED



[View online »](#)

Product images:


Western blot analysis of extracts of HeLa cells, using Phospho-PEA15-S104 pAb ([TA379789]) at 1:2000 dilution or PEA15 antibody (A9956). HeLa cells were treated by PMA/TPA (200nM) for 15 minutes after serum-starvation overnight. | Secondary antibody: HRP Goat Anti-Rabbit IgG (H+L) at 1:10000 dilution. | Lysates/proteins: 25ug per lane. | Blocking buffer: 3% BSA. | Detection: ECL Basic Kit . | Exposure time: 90s.



Western blot analysis of extracts of HeLa and C6 cells, using Phospho-PEA15-S104 antibody ([TA379789]) at 1:2000 dilution. HeLa cells were treated by PMA/TPA (200nM) for 15 minutes after serum-starvation overnight. C6 cells were treated by PMA/TPA (200nM) for 30 minutes after serum-starvation overnight. | Secondary antibody: HRP Goat Anti-Rabbit IgG (H+L) at 1:10000 dilution. | Lysates/proteins: 25ug per lane. | Blocking buffer: 3% BSA. | Detection: ECL Basic Kit . | Exposure time: 10s.