

## Product datasheet for **TA379777**

### PDP2 Rabbit Polyclonal Antibody

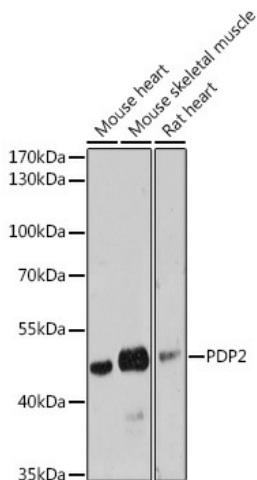
#### Product data:

Product Type:	Primary Antibodies
Applications:	ICC/IF, WB
Recommended Dilution:	WB, 1:500 - 1:2000 IF, 1:50 - 1:200
Reactivity:	Mouse, Rat
Host:	Rabbit
Isotype:	IgG
Clonality:	Polyclonal
Immunogen:	Recombinant fusion protein containing a sequence corresponding to amino acids 67-250 of human PDP2 (NP_065837.1).
Formulation:	Buffer: PBS with 0.02% sodium azide, 50% glycerol, pH 7.3.
Concentration:	lot specific
Purification:	Affinity purification
Conjugation:	Unconjugated
Storage:	Store at -20°C. Avoid freeze / thaw cycles.
Stability:	Shelf life: one year from despatch.
Predicted Protein Size:	59kDa
Gene Name:	pyruvate dehydrogenase phosphatase catalytic subunit 2
Database Link:	<a href="#">Q9P2J9</a>
Background:	This gene is a mitochondrial protein that functions as a phosphatase and is involved in the enzymatic resetting of the pyruvate dehydrogenase complex. Alternative splicing results in multiple transcript variants encoding the same protein.
Synonyms:	KIAA1348; PPM2C2

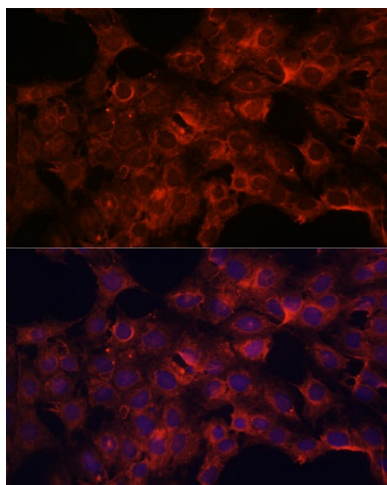


[View online »](#)

**Product images:**



Western blot analysis of extracts of various cell lines, using PDP2 antibody (TA379777) at 1:3000 dilution. | Secondary antibody: HRP Goat Anti-Rabbit IgG (H+L) at 1:10000 dilution. | Lysates/proteins: 25ug per lane. | Blocking buffer: 3% nonfat dry milk in TBST. | Detection: ECL Enhanced Kit . | Exposure time: 90s.



Immunofluorescence analysis of C6 cells using PDP2 antibody (TA379777) at dilution of 1:100. Blue: DAPI for nuclear staining.