

Product datasheet for **TA379757S**

PDHA2 Rabbit Polyclonal Antibody

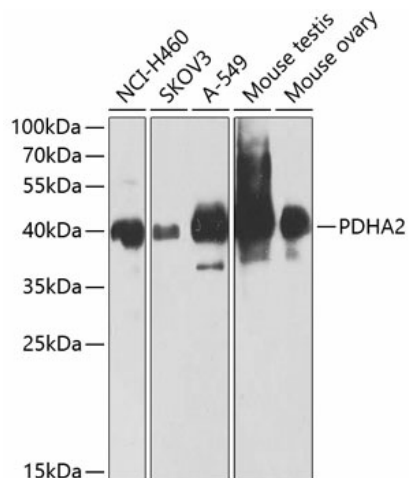
Product data:

Product Type:	Primary Antibodies
Applications:	ICC/IF, WB
Recommended Dilution:	WB, 1:500 - 1:2000 IF, 1:50 - 1:200
Reactivity:	Human, Mouse, Rat
Modifications:	Unmodified
Host:	Rabbit
Isotype:	IgG
Clonality:	Polyclonal
Immunogen:	Recombinant fusion protein containing a sequence corresponding to amino acids 119-388 of human PDHA2 (NP_005381.1).
Formulation:	Buffer: PBS with 0.02% sodium azide, 50% glycerol, pH 7.3.
Concentration:	lot specific
Purification:	Affinity purification
Conjugation:	Unconjugated
Storage:	Store at -20°C. Avoid freeze / thaw cycles.
Stability:	Shelf life: one year from despatch.
Predicted Protein Size:	42kDa
Gene Name:	pyruvate dehydrogenase (lipoamide) alpha 2
Database Link:	Entrez Gene 5161 Human P29803
Background:	The pyruvate dehydrogenase complex catalyzes the overall conversion of pyruvate to acetyl-CoA and CO ₂ , and thereby links the glycolytic pathway to the tricarboxylic cycle.
Synonyms:	MGC149517; MGC149518; PDHAL

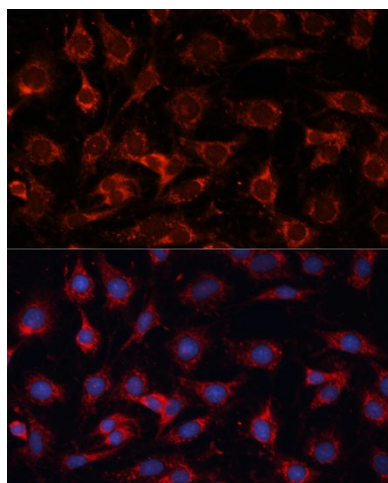


[View online »](#)

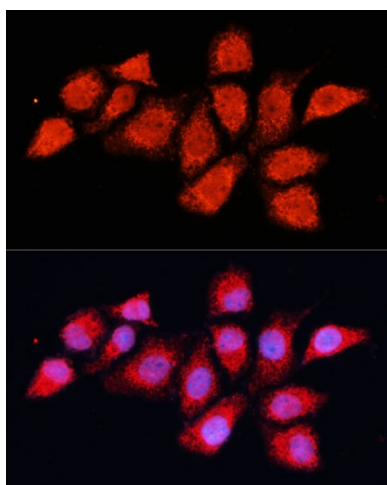
Product images:



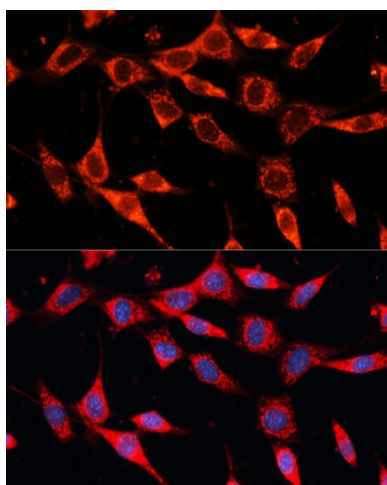
Western blot analysis of extracts of various cell lines, using PDHA2 antibody ([TA379757]) at 1:1000 dilution. | Secondary antibody: HRP Goat Anti-Rabbit IgG (H+L) at 1:10000 dilution. | Lysates/proteins: 25ug per lane. | Blocking buffer: 3% nonfat dry milk in TBST. | Detection: ECL Enhanced Kit. | Exposure time: 60s.



Immunofluorescence analysis of C6 cells using PDHA2 Polyclonal Antibody ([TA379757]) at dilution of 1:100 (40x lens). Blue: DAPI for nuclear staining.



Immunofluorescence analysis of HeLa cells using PDHA2 Polyclonal Antibody ([TA379757]) at dilution of 1:100 (40x lens). Blue: DAPI for nuclear staining.



Immunofluorescence analysis of NIH-3T3 cells using PDHA2 Polyclonal Antibody ([TA379757]) at dilution of 1:100 (40x lens). Blue: DAPI for nuclear staining.