

Product datasheet for **TA379748**

PDGF Receptor beta (PDGFRB) Rabbit Polyclonal Antibody

Product data:

Product Type:	Primary Antibodies
Applications:	ICC/IF, IHC, WB
Recommended Dilution:	WB,1:500 - 1:1000 IHC,1:20 - 1:50 IF,1:20 - 1:50
Reactivity:	Human, Mouse, Rat
Modifications:	Unmodified
Host:	Rabbit
Isotype:	IgG
Clonality:	Polyclonal
Immunogen:	A synthetic Peptide of human PDGFRB
Formulation:	Buffer: PBS with 0.02% sodium azide,pH7.3.
Concentration:	lot specific
Purification:	Affinity purification
Conjugation:	Unconjugated
Storage:	Store at 4°C. Avoid freeze / thaw cycles. Buffer: PBS with 0.02% sodium azide,pH7.3.
Stability:	Shelf life: one year from despatch.
Predicted Protein Size:	37kDa/123kDa
Gene Name:	platelet derived growth factor receptor beta
Database Link:	Entrez Gene 5159 Human P09619



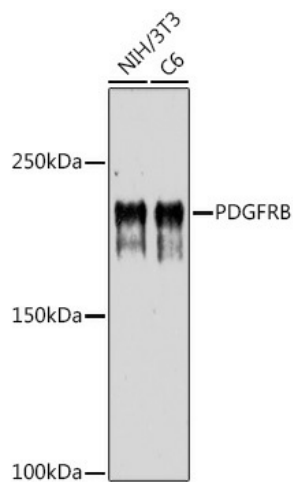
[View online »](#)

Background:

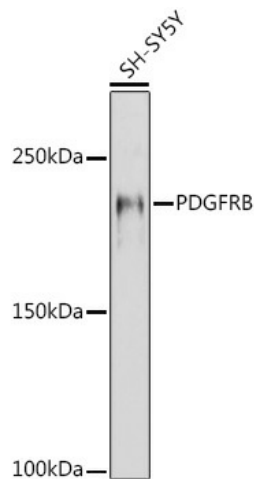
This gene encodes a cell surface tyrosine kinase receptor for members of the platelet-derived growth factor family. These growth factors are mitogens for cells of mesenchymal origin. The identity of the growth factor bound to a receptor monomer determines whether the functional receptor is a homodimer or a heterodimer, composed of both platelet-derived growth factor receptor alpha and beta polypeptides. This gene is flanked on chromosome 5 by the genes for granulocyte-macrophage colony-stimulating factor and macrophage-colony stimulating factor receptor; all three genes may be implicated in the 5-q syndrome. A translocation between chromosomes 5 and 12, that fuses this gene to that of the translocation, ETV6, leukemia gene, results in chronic myeloproliferative disorder with eosinophilia.

Synonyms:

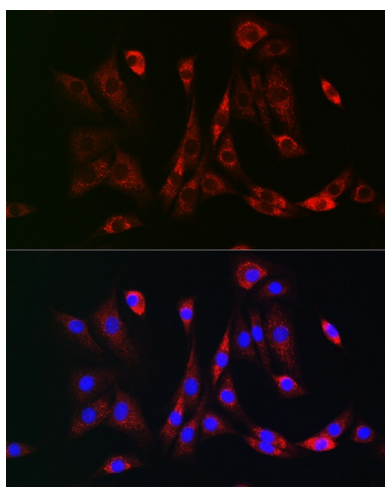
CD140b; JTK12; PDGF-R-beta; PDGFR; PDGFR1

Product images:

Western blot analysis of extracts of various cell lines, using PDGFRB antibody (TA379748) at 1:1000 dilution. | Secondary antibody: HRP Goat Anti-Rabbit IgG (H+L) at 1:10000 dilution. | Lysates/proteins: 25ug per lane. | Blocking buffer: 3% nonfat dry milk in TBST. | Detection: ECL Basic Kit . | Exposure time: 180s.



Western blot analysis of extracts of SH-SY5Y cells, using PDGFRB antibody (TA379748) at 1:1000 dilution. | Secondary antibody: HRP Goat Anti-Rabbit IgG (H+L) at 1:10000 dilution. | Lysates/proteins: 25ug per lane. | Blocking buffer: 3% nonfat dry milk in TBST. | Detection: ECL Enhanced Kit . | Exposure time: 180s.



Immunofluorescence analysis of NIH-3T3 cells using PDGFRB Rabbit pAb (TA379748) at dilution of 1:100 (40x lens). Blue: DAPI for nuclear staining.