

## Product datasheet for **TA379730S**

### **PDE3A Rabbit Polyclonal Antibody**

#### **Product data:**

Product Type:	Primary Antibodies
Applications:	ELISA, ICC/IF, IHC, WB
Recommended Dilution:	WB, 1:500 - 1:2000 IHC-P, 1:50 - 1:200 IF/ICC, 1:50 - 1:100 ELISA, Recommended starting concentration is 1 µg/mL. Please optimize the concentration based on your specific assay requirements.
Reactivity:	Human, Mouse, Rat
Host:	Rabbit
Isotype:	IgG
Clonality:	Polyclonal
Formulation:	PBS with 0.05% proclin300, 50% glycerol, pH7.3.
Concentration:	lot specific
Purification:	Affinity purification
Conjugation:	Unconjugated
Storage:	Store at -20°C. Avoid freeze / thaw cycles.
Stability:	Shelf life: one year from despatch.
Predicted Protein Size:	125kDa
Gene Name:	phosphodiesterase 3A
Database Link:	<a href="#">Entrez Gene 5139 Human Q14432</a>

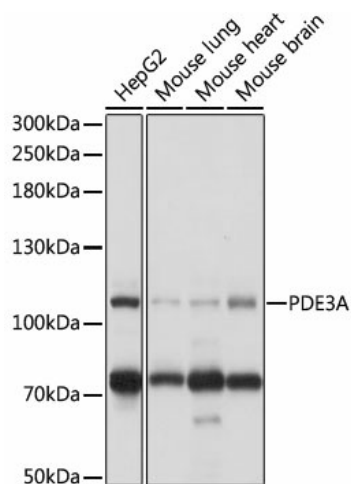
[View online »](#)

**Background:**

This gene encodes a member of the cGMP-inhibited cyclic nucleotide phosphodiesterase (cGI-PDE) family. cGI-PDE enzymes hydrolyze both cAMP and cGMP, and play critical roles in many cellular processes by regulating the amplitude and duration of intracellular cyclic nucleotide signals. The encoded protein mediates platelet aggregation and also plays important roles in cardiovascular function by regulating vascular smooth muscle contraction and relaxation. Inhibitors of the encoded protein may be effective in treating congestive heart failure. Alternatively spliced transcript variants encoding multiple isoforms have been observed for this gene.

**Synonyms:**

CGI-PDE

**Product images:**


Western blot analysis of various lysates using PDE3A Rabbit pAb ([TA379730]) at 1:1000 dilution.

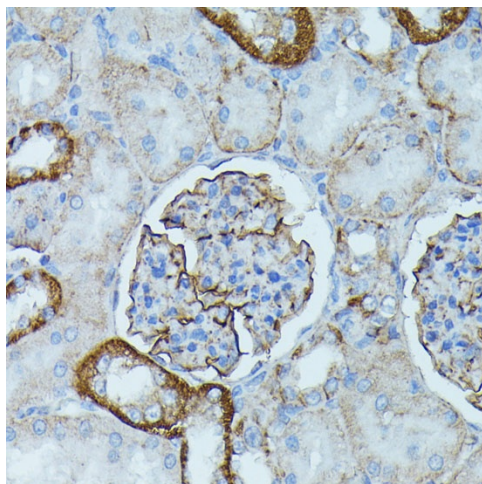
Secondary antibody: HRP-conjugated Goat anti-Rabbit IgG (H+L) (AS014) at 1:10000 dilution.

Lysates/proteins: 25µg per lane.

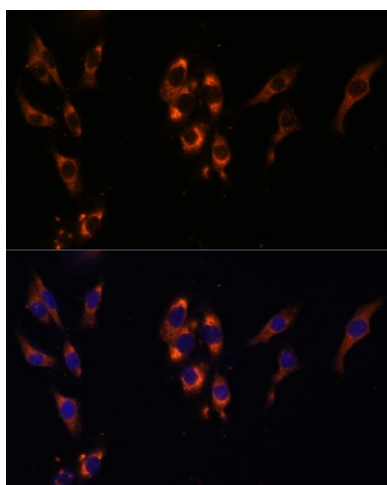
Blocking buffer: 3% nonfat dry milk in TBST.

Detection: ECL Basic Kit (RM00020).

Exposure time: 5s.



Immunohistochemistry analysis of paraffin-embedded Rat heart using PDE3A Rabbit pAb ([TA379730]) at dilution of 1:200 (40x lens). High pressure antigen retrieval performed with 0.01M Citrate Bufferr (pH 6.0) prior to IHC staining.



Immunofluorescence analysis of HeLa cells using PDE3A Rabbit pAb ([TA379730]) at dilution of 1:100 (40x lens). Secondary antibody: Cy3-conjugated Goat anti-Rabbit IgG (H+L) (AS007) at 1:500 dilution. Blue: DAPI for nuclear staining.