

## Product datasheet for **TA379727S**

### PDE12 Rabbit Polyclonal Antibody

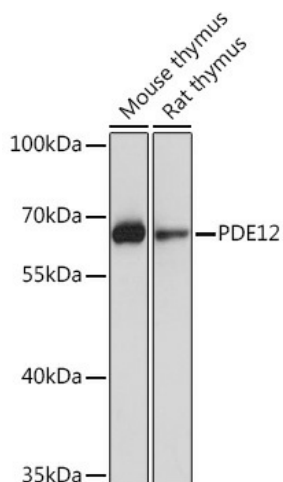
#### Product data:

Product Type:	Primary Antibodies
Applications:	ELISA, ICC/IF, WB
Recommended Dilution:	WB, 1:500 - 1:2000 IF/ICC, 1:50 - 1:200 ELISA, Recommended starting concentration is 1 µg/mL. Please optimize the concentration based on your specific assay requirements.
Reactivity:	Mouse, Rat
Host:	Rabbit
Isotype:	IgG
Clonality:	Polyclonal
Formulation:	Buffer: PBS with 0.02% sodium azide, 50% glycerol, pH 7.3.
Concentration:	lot specific
Purification:	Affinity purification
Conjugation:	Unconjugated
Storage:	Store at -20°C. Avoid freeze / thaw cycles.
Stability:	Shelf life: one year from despatch.
Predicted Protein Size:	67kDa
Gene Name:	phosphodiesterase 12
Database Link:	<a href="#">Q6L8Q7</a>
Background:	Enables 3'-5'-exoribonuclease activity. Involved in several processes, including RNA metabolic process; cellular response to cytokine stimulus; and regulation of mitochondrial mRNA stability. Located in mitochondrial matrix.
Synonyms:	2-PDE; DKFZp667B1218

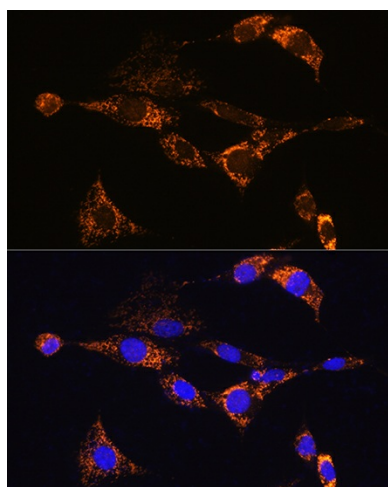


[View online »](#)

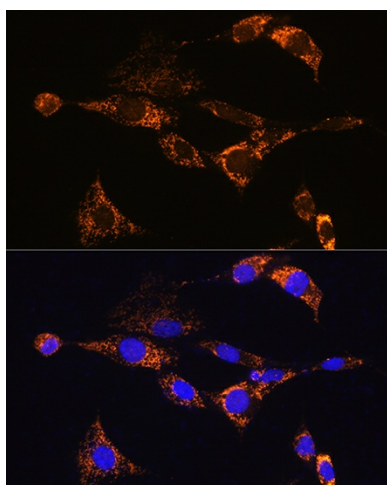
## Product images:



Western blot analysis of various lysates using PDE12 Rabbit pAb (TA379727) at 1:1000 dilution. Secondary antibody: HRP-conjugated Goat anti-Rabbit IgG (H+L) (AS014) at 1:10000 dilution. Lysates/proteins: 25µg per lane. Blocking buffer: 3% nonfat dry milk in TBST. Detection: ECL Basic Kit (RM00020). Exposure time: 10s.



Immunofluorescence analysis of C6 cells using PDE12 Rabbit pAb (TA379727) at dilution of 1:100. Secondary antibody: Cy3-conjugated Goat anti-Rabbit IgG (H+L) (AS007) at 1:500 dilution. Blue: DAPI for nuclear staining.



Immunofluorescence analysis of NIH/3T3 cells using PDE12 Rabbit pAb ([TA379727]) at dilution of 1:100. Secondary antibody: Cy3-conjugated Goat anti-Rabbit IgG (H+L) (AS007) at 1:500 dilution. Blue: DAPI for nuclear staining.