

Product datasheet for **TA379702S**

PCNX1 Rabbit Polyclonal Antibody

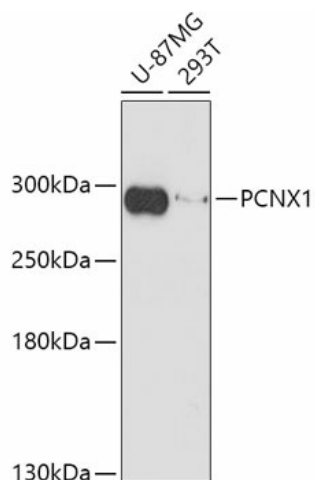
Product data:

Product Type:	Primary Antibodies
Applications:	ELISA, WB
Recommended Dilution:	WB, 1:500 - 1:2000 ELISA, Recommended starting concentration is 1 µg/mL. Please optimize the concentration based on your specific assay requirements.
Reactivity:	Human
Modifications:	Unmodified
Host:	Rabbit
Isotype:	IgG
Clonality:	Polyclonal
Formulation:	Buffer: PBS with 0.02% sodium azide, 50% glycerol, pH 7.3.
Concentration:	lot specific
Purification:	Affinity purification
Conjugation:	Unconjugated
Storage:	Store at -20°C. Avoid freeze / thaw cycles.
Stability:	Shelf life: one year from despatch.
Predicted Protein Size:	259kDa
Gene Name:	pecanex homolog 1 (Drosophila)
Database Link:	Entrez Gene 22990 Human Q96RV3
Background:	This gene encodes an evolutionarily conserved transmembrane protein similar to the pecanex protein in Drosophila. The fly protein is a component of the Notch signaling pathway, which functions in several developmental processes.



[View online »](#)

Product images:



Western blot analysis of various lysates using PCNX1 Rabbit pAb ([TA379702]) at 1:1000 dilution.

Secondary antibody: HRP-conjugated Goat anti-Rabbit IgG (H+L) at 1:10000 dilution.

Lysates/proteins: 25µg per lane.

Blocking buffer: 3% nonfat dry milk in TBST.

Detection: ECL Basic Kit .

Exposure time: 3min.