

Product datasheet for **TA379701**

Pericentrin (PCNT) Rabbit Polyclonal Antibody

Product data:

Product Type:	Primary Antibodies
Applications:	ICC/IF, WB
Recommended Dilution:	WB, 1:1000 - 1:2000 IF, 1:50 - 1:200
Reactivity:	Human, Rat
Modifications:	Unmodified
Host:	Rabbit
Isotype:	IgG
Clonality:	Polyclonal
Immunogen:	Recombinant protein of human PCNT.
Formulation:	Buffer: PBS with 0.02% sodium azide, 50% glycerol, pH 7.3.
Concentration:	lot specific
Purification:	Affinity purification
Conjugation:	Unconjugated
Storage:	Store at -20°C. Avoid freeze / thaw cycles.
Stability:	Shelf life: one year from despatch.
Predicted Protein Size:	378kDa
Gene Name:	pericentrin
Database Link:	Entrez Gene 5116 Human O95613

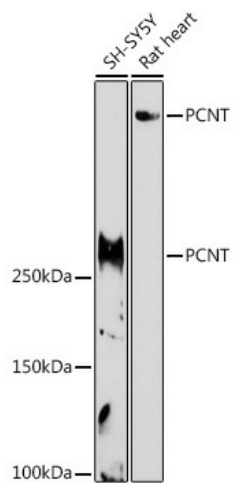
Background: The protein encoded by this gene binds to calmodulin and is expressed in the centrosome. It is an integral component of the pericentriolar material (PCM). The protein contains a series of coiled-coil domains and a highly conserved PCM targeting motif called the PACT domain near its C-terminus. The protein interacts with the microtubule nucleation component gamma-tubulin and is likely important to normal functioning of the centrosomes, cytoskeleton, and cell-cycle progression. Mutations in this gene cause Seckel syndrome-4 and microcephalic osteodysplastic primordial dwarfism type II. Two transcript variants encoding different isoforms have been found for this gene.



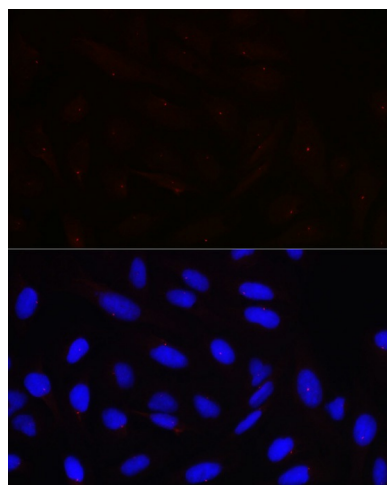
[View online »](#)

Synonyms: KEN; kendrin; KIAA0402; MOPD2; PCN; PCNT1; PCNT2; PCNTB; PCTN2; pericentrin; pericentrin-2; pericentrin-380; Pericentrin-B; SCKL4

Product images:



Western blot analysis of extracts of various cell lines, using PCNT antibody (TA379701) at 1:1000 dilution. | Secondary antibody: HRP Goat Anti-Rabbit IgG (H+L) at 1:10000 dilution. | Lysates/proteins: 25ug per lane. | Blocking buffer: 3% nonfat dry milk in TBST. | Detection: ECL Basic Kit . | Exposure time: 180s.



Immunofluorescence analysis of U-2 OS cells using PCNT Rabbit pAb (TA379701) at dilution of 1:100 (40x lens). Blue: DAPI for nuclear staining.