

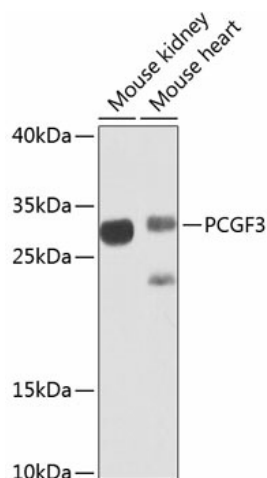
Product datasheet for **TA379691S**

PCGF3 Rabbit Polyclonal Antibody

Product data:

Product Type:	Primary Antibodies
Applications:	ELISA, WB
Recommended Dilution:	WB, 1:500 - 1:2000 ELISA, Recommended starting concentration is 1 µg/mL. Please optimize the concentration based on your specific assay requirements.
Reactivity:	Mouse
Modifications:	Unmodified
Host:	Rabbit
Isotype:	IgG
Clonality:	Polyclonal
Formulation:	Buffer: PBS with 0.02% sodium azide, 50% glycerol, pH 7.3.
Concentration:	lot specific
Purification:	Affinity purification
Conjugation:	Unconjugated
Storage:	Store at -20°C. Avoid freeze / thaw cycles.
Stability:	Shelf life: one year from despatch.
Predicted Protein Size:	28kDa
Gene Name:	polycomb group ring finger 3
Database Link:	Q3KNV8
Background:	The protein encoded by this gene contains a C3HC4 type RING finger, which is a motif known to be involved in protein-protein interactions. The specific function of this protein has not yet been determined.
Synonyms:	DKFZp686D20235; DONG1; FLJ36550; FLJ43813; MGC40413; MGC129615; RNF3; RNF3A


[View online »](#)

Product images:

Western blot analysis of various lysates using PCGF3 Rabbit pAb ([TA379691]) at 1:1000 dilution. Secondary antibody: HRP-conjugated Goat anti-Rabbit IgG (H+L) (AS014) at 1:10000 dilution. Lysates/proteins: 25µg per lane. Blocking buffer: 3% nonfat dry milk in TBST. Detection: ECL Enhanced Kit (RM00021). Exposure time: 30s.