

Product datasheet for **TA379689S**

PCGF1 Rabbit Polyclonal Antibody

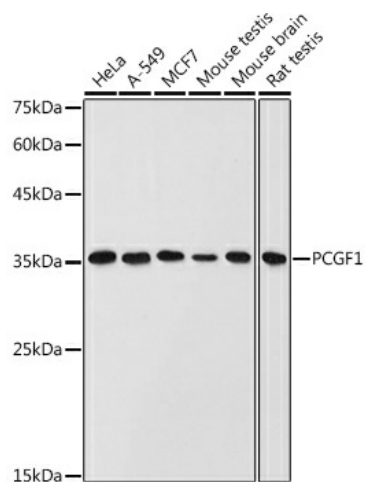
Product data:

Product Type:	Primary Antibodies
Applications:	ELISA, ICC/IF, WB
Recommended Dilution:	WB, 1:500 - 1:1000 IF/ICC, 1:50 - 1:200 ELISA, Recommended starting concentration is 1 µg/mL. Please optimize the concentration based on your specific assay requirements.
Reactivity:	Human, Mouse, Rat
Modifications:	Unmodified
Host:	Rabbit
Isotype:	IgG
Clonality:	Polyclonal
Formulation:	Buffer: PBS with 0.02% sodium azide, 50% glycerol, pH 7.3.
Concentration:	lot specific
Purification:	Affinity purification
Conjugation:	Unconjugated
Storage:	Store at -20°C. Avoid freeze / thaw cycles.
Stability:	Shelf life: one year from despatch.
Predicted Protein Size:	30kDa
Gene Name:	polycomb group ring finger 1
Database Link:	Entrez Gene 84759 Human Q9BSM1
Background:	PCGF1 is a mammalian homolog of the Drosophila polycomb group genes, which act as transcriptional repressors to regulate anterior-posterior patterning in early embryonic development (Nunes et al., 2001 [PubMed 11287196]). See also PCGF2 (MIM 600346).
Synonyms:	2010002K04Rik; FLJ43754; MGC10882; NSPC1; RNF3A-2; RNF68



[View online »](#)

Product images:



Western blot analysis of various lysates using PCGF1 Rabbit pAb ([TA379689]) at 1:1000 dilution.

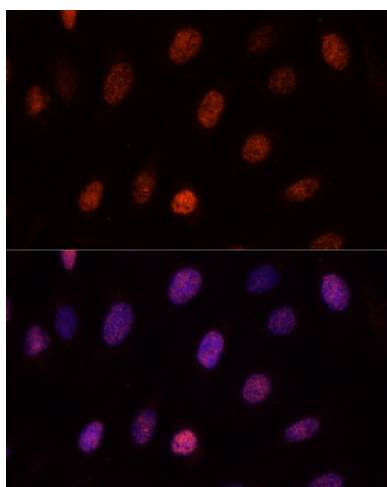
Secondary antibody: HRP-conjugated Goat anti-Rabbit IgG (H+L) at 1:10000 dilution.

Lysates/proteins: 25µg per lane.

Blocking buffer: 3% nonfat dry milk in TBST.

Detection: ECL Basic Kit .

Exposure time: 30s.



Immunofluorescence analysis of U-2OS cells using PCGF1 Rabbit pAb ([TA379689]) at dilution of 1:100. Blue: DAPI for nuclear staining.