

## Product datasheet for **TA379689**

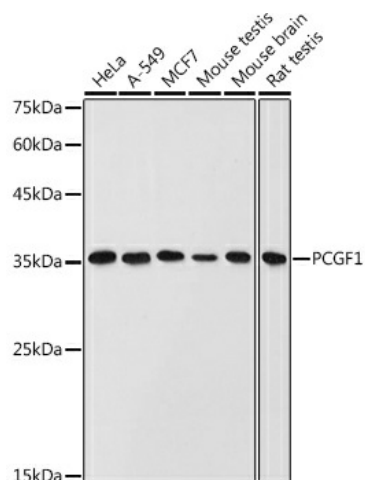
### PCGF1 Rabbit Polyclonal Antibody

#### Product data:

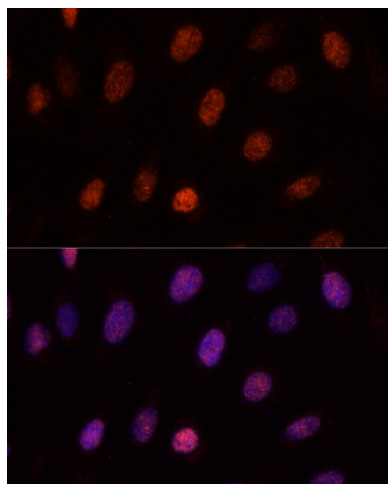
Product Type:	Primary Antibodies
Applications:	ICC/IF, WB
Recommended Dilution:	WB,1:500 - 1:2000 IF,1:50 - 1:200
Reactivity:	Human, Mouse, Rat
Modifications:	Unmodified
Host:	Rabbit
Isotype:	IgG
Clonality:	Polyclonal
Immunogen:	Recombinant fusion protein containing a sequence corresponding to amino acids 20-259 of human PCGF1 (NP_116062.2).
Formulation:	Buffer: PBS with 0.02% sodium azide,50% glycerol,pH7.3.
Concentration:	lot specific
Purification:	Affinity purification
Conjugation:	Unconjugated
Storage:	Store at -20°C. Avoid freeze / thaw cycles.
Stability:	Shelf life: one year from despatch.
Predicted Protein Size:	20kDa/30kDa
Gene Name:	polycomb group ring finger 1
Database Link:	<a href="#">Entrez Gene 84759 Human Q9BSM1</a>
Background:	PCGF1 is a mammalian homolog of the Drosophila polycomb group genes, which act as transcriptional repressors to regulate anterior-posterior patterning in early embryonic development (Nunes et al., 2001 [PubMed 11287196]). See also PCGF2 (MIM 600346). [supplied by OMIM, Aug 2008]
Synonyms:	2010002K04Rik; FLJ43754; MGC10882; NSPC1; RNF3A-2; RNF68



[View online »](#)

**Product images:**

Western blot analysis of extracts of various cell lines, using PCGF1 antibody (TA379689) at 1:1000 dilution. | Secondary antibody: HRP Goat Anti-Rabbit IgG (H+L) at 1:10000 dilution. | Lysates/proteins: 25ug per lane. | Blocking buffer: 3% nonfat dry milk in TBST. | Detection: ECL Basic Kit . | Exposure time: 30s.



Immunofluorescence analysis of U-2OS cells using PCGF1 antibody (TA379689) at dilution of 1:100. Blue: DAPI for nuclear staining.