

Product datasheet for **TA379688**

PCF11 Rabbit Polyclonal Antibody

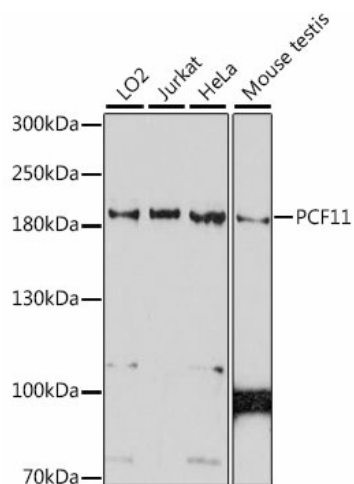
Product data:

Product Type:	Primary Antibodies
Applications:	WB
Recommended Dilution:	WB,1:500 - 1:2000
Reactivity:	Human, Mouse
Modifications:	Unmodified
Host:	Rabbit
Isotype:	IgG
Clonality:	Polyclonal
Immunogen:	Recombinant fusion protein containing a sequence corresponding to amino acids 1256-1555 of human PCF11 (NP_056969.2).
Formulation:	Buffer: PBS with 0.02% sodium azide,50% glycerol,pH7.3.
Concentration:	lot specific
Purification:	Affinity purification
Conjugation:	Unconjugated
Storage:	Store at -20°C. Avoid freeze / thaw cycles.
Stability:	Shelf life: one year from despatch.
Predicted Protein Size:	173kDa
Gene Name:	PCF11 cleavage and polyadenylation factor subunit
Database Link:	Entrez Gene 51585 Human O94913
Background:	The protein encoded by this gene binds to CLP1 to form pre-mRNA cleavage factor II _m . The encoded protein is necessary for efficient Pol II transcription termination and may be involved in degradation of the 3' product of polyA site cleavage.
Synonyms:	KIAA0824



[View online »](#)

Product images:



Western blot analysis of extracts of various cell lines, using PCF11 antibody (TA379688) at 1:1000 dilution. | Secondary antibody: HRP Goat Anti-Rabbit IgG (H+L) at 1:10000 dilution. | Lysates/proteins: 25ug per lane. | Blocking buffer: 3% nonfat dry milk in TBST. | Detection: ECL Basic Kit . | Exposure time: 90s.