

Product datasheet for **TA379667S**

PCB (PC) Rabbit Polyclonal Antibody

Product data:

Product Type:	Primary Antibodies
Applications:	ICC/IF, IP, WB
Recommended Dilution:	WB,1:500 - 1:2000 IF,1:10 - 1:100 IP,1:50 - 1:200
Reactivity:	Human, Mouse, Rat
Modifications:	Unmodified
Host:	Rabbit
Isotype:	IgG
Clonality:	Polyclonal
Immunogen:	Recombinant fusion protein containing a sequence corresponding to amino acids 879-1178 of human Pyruvate carboxylase (Pyruvate carboxylase (PC)) (NP_001035806.1).
Formulation:	Buffer: PBS with 0.02% sodium azide,50% glycerol,pH7.3.
Concentration:	lot specific
Purification:	Affinity purification
Conjugation:	Unconjugated
Storage:	Store at -20°C. Avoid freeze / thaw cycles.
Stability:	Shelf life: one year from despatch.
Predicted Protein Size:	57kDa/129kDa
Gene Name:	pyruvate carboxylase
Database Link:	Entrez Gene 5091 Human P11498



[View online »](#)

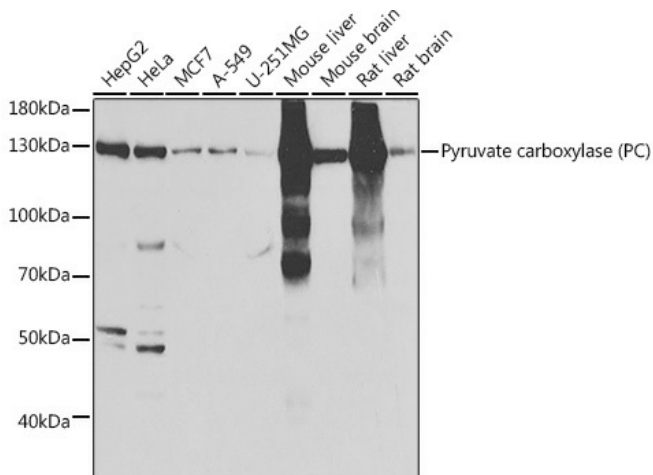
Background:

This gene encodes pyruvate carboxylase, which requires biotin and ATP to catalyse the carboxylation of pyruvate to oxaloacetate. The active enzyme is a homotetramer arranged in a tetrahedron which is located exclusively in the mitochondrial matrix. Pyruvate carboxylase is involved in gluconeogenesis, lipogenesis, insulin secretion and synthesis of the neurotransmitter glutamate. Mutations in this gene have been associated with pyruvate carboxylase deficiency. Alternatively spliced transcript variants with different 5' UTRs, but encoding the same protein, have been found for this gene.

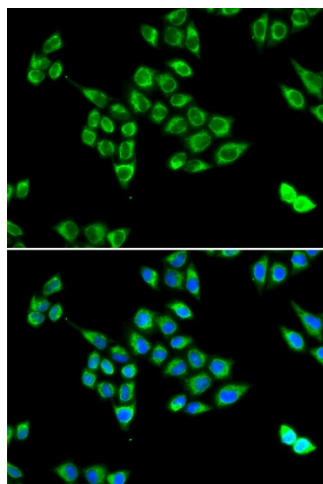
Synonyms:

PCB

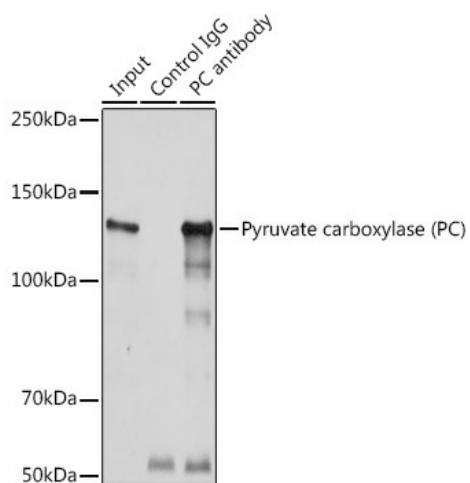
Product images:



Western blot analysis of extracts of various cell lines, using Pyruvate carboxylase (Pyruvate carboxylase (PC)) antibody ([TA379667]) at 1:1000 dilution. | Secondary antibody: HRP Goat Anti-Rabbit IgG (H+L) at 1:10000 dilution. | Lysates/proteins: 25ug per lane. | Blocking buffer: 3% nonfat dry milk in TBST. | Detection: ECL Basic Kit . | Exposure time: 3s.



Immunofluorescence analysis of U2OS cells using Pyruvate carboxylase (Pyruvate carboxylase (PC)) antibody ([TA379667]). Blue: DAPI for nuclear staining.



Immunoprecipitation analysis of 300ug extracts of HeLa cells using 3ug Pyruvate carboxylase (Pyruvate carboxylase (PC)) antibody ([TA379667]). Western blot was performed from the immunoprecipitate using Pyruvate carboxylase (Pyruvate carboxylase (PC)) antibody ([TA379667]) at a dilution of 1:1000.