

Product datasheet for **TA379665S**

PBX3 Rabbit Polyclonal Antibody

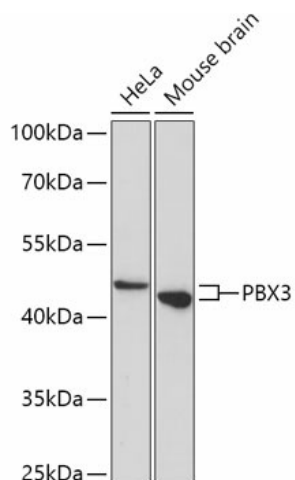
Product data:

| | |
|-------------------------|---|
| Product Type: | Primary Antibodies |
| Applications: | ELISA, WB |
| Recommended Dilution: | WB, 1:500 - 1:2000 ELISA, Recommended starting concentration is 1 µg/mL. Please optimize the concentration based on your specific assay requirements. |
| Reactivity: | Human, Mouse |
| Modifications: | Unmodified |
| Host: | Rabbit |
| Isotype: | IgG |
| Clonality: | Polyclonal |
| Formulation: | Buffer: PBS with 0.02% sodium azide, 50% glycerol, pH 7.3. |
| Concentration: | lot specific |
| Purification: | Affinity purification |
| Conjugation: | Unconjugated |
| Storage: | Store at -20°C. Avoid freeze / thaw cycles. |
| Stability: | Shelf life: one year from despatch. |
| Predicted Protein Size: | 47kDa |
| Gene Name: | PBX homeobox 3 |
| Database Link: | Entrez Gene 5090 Human P40426 |
| Background: | Predicted to enable DNA-binding transcription factor activity, RNA polymerase II-specific and RNA polymerase II cis-regulatory region sequence-specific DNA binding activity. Predicted to be involved in animal organ development; neuron development; and regulation of transcription by RNA polymerase II. Predicted to act upstream of or within several processes, including adult locomotory behavior; dorsal spinal cord development; and regulation of respiratory gaseous exchange by nervous system process. Predicted to be located in nucleus. Predicted to be part of chromatin. |
| Synonyms: | PBX3 |



[View online »](#)

Product images:



Western blot analysis of various lysates using PBX3 Rabbit pAb ([TA379665]) at 1:1000 dilution. Secondary antibody: HRP-conjugated Goat anti-Rabbit IgG (H+L) (AS014) at 1:10000 dilution. Lysates/proteins: 25µg per lane. Blocking buffer: 3% nonfat dry milk in TBST. Detection: ECL Basic Kit (RM00020). Exposure time: 5min.