

Product datasheet for **TA379661S**

Baf180 (PBRM1) Rabbit Polyclonal Antibody

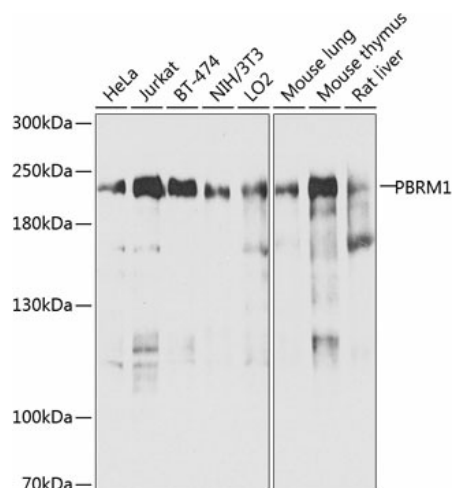
Product data:

Product Type:	Primary Antibodies
Applications:	ELISA, IP, WB
Recommended Dilution:	WB, 1:500 - 1:2000 IP, 0.5µg-4µg antibody for 200µg-400µg extracts of whole cells ELISA, Recommended starting concentration is 1 µg/mL. Please optimize the concentration based on your specific assay requirements.
Reactivity:	Human, Mouse, Rat
Modifications:	Unmodified
Host:	Rabbit
Isotype:	IgG
Clonality:	Polyclonal
Formulation:	Buffer: PBS with 0.02% sodium azide, 50% glycerol, pH 7.3.
Concentration:	lot specific
Purification:	Affinity purification
Conjugation:	Unconjugated
Storage:	Store at -20°C. Avoid freeze / thaw cycles.
Stability:	Shelf life: one year from despatch.
Predicted Protein Size:	193kDa
Gene Name:	polybromo 1
Database Link:	Entrez Gene 55193 Human Q86U86
Background:	This locus encodes a subunit of ATP-dependent chromatin-remodeling complexes. The encoded protein has been identified as an integral component of complexes necessary for ligand-dependent transcriptional activation by nuclear hormone receptors. Mutations at this locus have been associated with primary clear cell renal cell carcinoma.
Synonyms:	BAF180; hPB1; MGC156155; MGC156156; PB1; Polybromo-1D

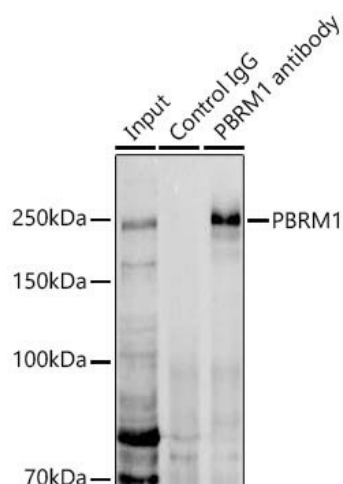


[View online »](#)

Product images:



Western blot analysis of various lysates using PBRM1 Rabbit pAb ([TA379661]) at 1:1000 dilution. Secondary antibody: HRP-conjugated Goat anti-Rabbit IgG (H+L) (AS014) at 1:10000 dilution. Lysates/proteins: 25µg per lane. Blocking buffer: 3% nonfat dry milk in TBST. Detection: ECL Enhanced Kit (RM00021). Exposure time: 30s.



Immunoprecipitation analysis of 300 µg extracts of Jurkat cells using 3 µg PBRM1 Rabbit pAb ([TA379661]). Western blot was performed from the immunoprecipitate using PBRM1 Rabbit pAb ([TA379661]) at a dilution of 1:500.