

Product datasheet for **TA379661**

Baf180 (PBRM1) Rabbit Polyclonal Antibody

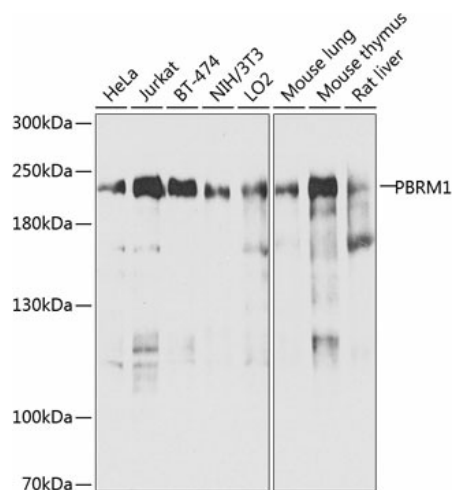
Product data:

| | |
|--------------------------------|--|
| Product Type: | Primary Antibodies |
| Applications: | IP, WB |
| Recommended Dilution: | WB,1:500 - 1:2000 |
| Reactivity: | Human, Mouse, Rat |
| Modifications: | Unmodified |
| Host: | Rabbit |
| Isotype: | IgG |
| Clonality: | Polyclonal |
| Immunogen: | Recombinant fusion protein containing a sequence corresponding to amino acids 1-230 of human PBRM1 (NP_060783.3). |
| Formulation: | Buffer: PBS with 0.02% sodium azide,50% glycerol,pH7.3. |
| Concentration: | lot specific |
| Purification: | Affinity purification |
| Conjugation: | Unconjugated |
| Storage: | Store at -20°C. Avoid freeze / thaw cycles. |
| Stability: | Shelf life: one year from despatch. |
| Predicted Protein Size: | 99kDa/181-192kDa |
| Gene Name: | polybromo 1 |
| Database Link: | Entrez Gene 55193 Human Q86U86 |
| Background: | This locus encodes a subunit of ATP-dependent chromatin-remodeling complexes. The encoded protein has been identified as in integral component of complexes necessary for ligand-dependent transcriptional activation by nuclear hormone receptors. Mutations at this locus have been associated with primary clear cell renal cell carcinoma. |
| Synonyms: | BAF180; hPB1; MGC156155; MGC156156; PB1; Polybromo-1D |



[View online »](#)

Product images:



Western blot analysis of extracts of various cell lines, using PBRM1 antibody (TA379661) at 1:1000 dilution. Secondary antibody: HRP Goat Anti-Rabbit IgG (H+L) at 1:10000 dilution. Lysates/proteins: 25ug per lane. Blocking buffer: 3% nonfat dry milk in TBST. Detection: ECL Enhanced Kit. Exposure time: 30s.