

## Product datasheet for **TA379647**

### **PATE3 Rabbit Polyclonal Antibody**

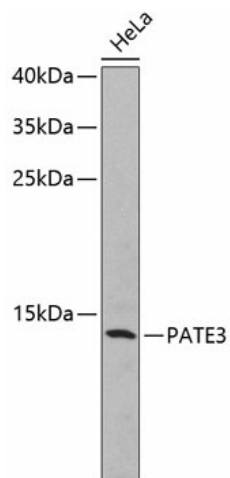
#### **Product data:**

Product Type:	Primary Antibodies
Applications:	WB
Recommended Dilution:	WB,1:500 - 1:2000
Reactivity:	Human
Modifications:	Unmodified
Host:	Rabbit
Isotype:	IgG
Clonality:	Polyclonal
Immunogen:	Recombinant fusion protein containing a sequence corresponding to amino acids 1-98 of human PATE3 (NP_001123355.3).
Formulation:	Buffer: PBS with 0.02% sodium azide,50% glycerol,pH7.3.
Concentration:	lot specific
Purification:	Affinity purification
Conjugation:	Unconjugated
Storage:	Store at -20°C. Avoid freeze / thaw cycles.
Stability:	Shelf life: one year from despatch.
Predicted Protein Size:	11kDa
Gene Name:	prostate and testis expressed 3
Database Link:	<a href="#">Entrez Gene 100169851 Human B3GLJ2</a>
Synonyms:	HEL-127; PATE-DJ



[View online »](#)

## Product images:



Western blot analysis of extracts of HeLa cells, using PATE3 antibody (TA379647). | Secondary antibody: HRP Goat Anti-Rabbit IgG (H+L) at 1:10000 dilution. | Lysates/proteins: 25ug per lane. | Blocking buffer: 3% nonfat dry milk in TBST.