

Product datasheet for **TA379645**

Parvin gamma (PARVG) Rabbit Polyclonal Antibody

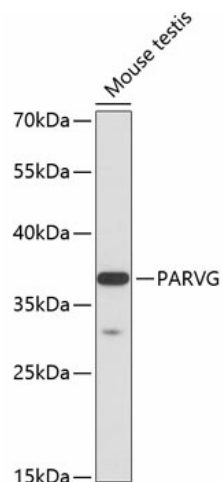
Product data:

Product Type:	Primary Antibodies
Applications:	WB
Recommended Dilution:	WB,1:500 - 1:2000
Reactivity:	Mouse
Modifications:	Unmodified
Host:	Rabbit
Isotype:	IgG
Clonality:	Polyclonal
Immunogen:	Recombinant fusion protein containing a sequence corresponding to amino acids 1-331 of human PARVG (NP_071424.1).
Formulation:	Buffer: PBS with 0.02% sodium azide,50% glycerol,pH7.3.
Concentration:	lot specific
Purification:	Affinity purification
Conjugation:	Unconjugated
Storage:	Store at -20°C. Avoid freeze / thaw cycles.
Stability:	Shelf life: one year from despatch.
Predicted Protein Size:	7kDa/15kDa/21kDa/31kDa/37kDa
Gene Name:	parvin gamma
Database Link:	Q9HBI0
Background:	Members of the parvin family, including PARVG, are actin-binding proteins associated with focal contacts.[supplied by OMIM, Aug 2004]
Synonyms:	gamma-parvin



[View online »](#)

Product images:



Western blot analysis of extracts of mouse testis, using PARVG antibody (TA379645) at 1:3000 dilution. | Secondary antibody: HRP Goat Anti-Rabbit IgG (H+L) at 1:10000 dilution. | Lysates/proteins: 25ug per lane. | Blocking buffer: 3% nonfat dry milk in TBST. | Detection: ECL Basic Kit . | Exposure time: 90s.