

Product datasheet for **TA379641**

PARP8 Rabbit Polyclonal Antibody

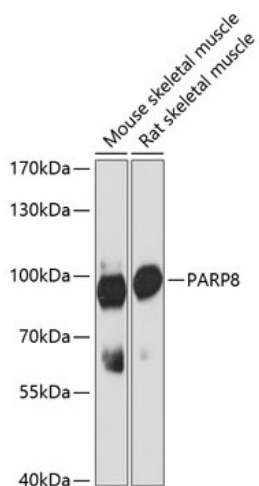
Product data:

Product Type:	Primary Antibodies
Applications:	IHC, WB
Recommended Dilution:	WB,1:500 - 1:2000 IHC,1:50 - 1:200
Reactivity:	Human, Mouse, Rat
Modifications:	Unmodified
Host:	Rabbit
Isotype:	IgG
Clonality:	Polyclonal
Immunogen:	Recombinant fusion protein containing a sequence corresponding to amino acids 1-300 of human PARP8 (NP_001171527.1).
Formulation:	Buffer: PBS with 0.02% sodium azide,50% glycerol,pH7.3.
Concentration:	lot specific
Purification:	Affinity purification
Conjugation:	Unconjugated
Storage:	Store at -20°C. Avoid freeze / thaw cycles.
Stability:	Shelf life: one year from despatch.
Predicted Protein Size:	91kDa/95kDa
Gene Name:	poly(ADP-ribose) polymerase family member 8
Database Link:	Entrez Gene 79668 Human Q8N3A8
Background:	Mono-ADP-ribosyltransferase that mediates mono-ADP-ribosylation of target proteins.
Synonyms:	FLJ21308; MGC42864; PARP-8



[View online »](#)

Product images:



Western blot analysis of extracts of various cell lines, using PARP8 antibody (TA379641) at 1:3000 dilution. | Secondary antibody: HRP Goat Anti-Rabbit IgG (H+L) at 1:10000 dilution. | Lysates/proteins: 25ug per lane. | Blocking buffer: 3% nonfat dry milk in TBST. | Detection: ECL Basic Kit . | Exposure time: 90s.