

Product datasheet for **TA379636**

PARP12 Rabbit Polyclonal Antibody

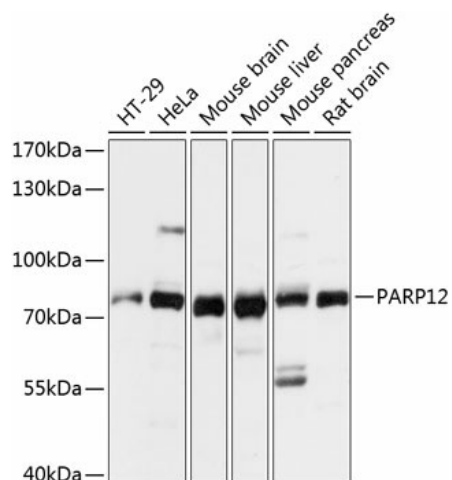
Product data:

Product Type:	Primary Antibodies
Applications:	WB
Recommended Dilution:	WB,1:500 - 1:2000
Reactivity:	Human, Mouse, Rat
Modifications:	Unmodified
Host:	Rabbit
Isotype:	IgG
Clonality:	Polyclonal
Immunogen:	Recombinant fusion protein containing a sequence corresponding to amino acids 462-701 of human PARP12 (NP_073587.1).
Formulation:	Buffer: PBS with 0.02% sodium azide,50% glycerol,pH7.3.
Concentration:	lot specific
Purification:	Affinity purification
Conjugation:	Unconjugated
Storage:	Store at -20°C. Avoid freeze / thaw cycles.
Stability:	Shelf life: one year from despatch.
Predicted Protein Size:	79kDa
Gene Name:	poly(ADP-ribose) polymerase family member 12
Database Link:	Entrez Gene 64761 Human Q9H0J9
Background:	Mono-ADP-ribosyltransferase that mediates mono-ADP-ribosylation of target proteins.
Synonyms:	FLJ22693; MST109; MSTP109; PARP-12; ZC3H1; ZC3HDC1



[View online »](#)

Product images:



Western blot analysis of extracts of various cell lines, using PARP12 antibody (TA379636) at 1:3000 dilution. | Secondary antibody: HRP Goat Anti-Rabbit IgG (H+L) at 1:10000 dilution. | Lysates/proteins: 25ug per lane. | Blocking buffer: 3% nonfat dry milk in TBST. | Detection: ECL Basic Kit . | Exposure time: 10s.