

## Product datasheet for **TA379620S**

### TENT2 Rabbit Polyclonal Antibody

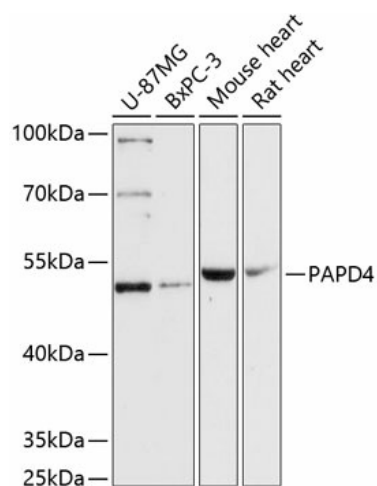
#### Product data:

|                         |  |
|-------------------------|--|
| Product Type:           | Primary Antibodies   |
| Applications:           | ELISA, WB  |
| Recommended Dilution:   | WB, 1:500 - 1:2000<br>ELISA, Recommended starting concentration is 1 µg/mL. Please optimize the concentration based on your specific assay requirements.   |
| Reactivity:             | Human, Mouse, Rat  |
| Modifications:          | Unmodified   |
| Host:                   | Rabbit   |
| Isotype:                | IgG  |
| Clonality:              | Polyclonal   |
| Formulation:            | Buffer: PBS with 0.02% sodium azide, 50% glycerol, pH 7.3.   |
| Concentration:          | lot specific   |
| Purification:           | Affinity purification  |
| Conjugation:            | Unconjugated   |
| Storage:                | Store at -20°C. Avoid freeze / thaw cycles.  |
| Stability:              | Shelf life: one year from despatch.  |
| Predicted Protein Size: | 56kDa  |
| Gene Name:              | PAP associated domain containing 4   |
| Database Link:          | <a href="#">Entrez Gene 167153 Human</a><br><a href="#">Q6PIY7</a>   |
| Background:             | Enables 5'-3' RNA polymerase activity and polynucleotide adenylyltransferase activity. Involved in RNA metabolic process and negative regulation of RNA catabolic process. Predicted to be located in nucleus. Predicted to be part of nuclear RNA-directed RNA polymerase complex. Predicted to be active in cytosol. |
| Synonyms:               | FLJ38499; GLD2; hGLD-2   |



[View online »](#)

## Product images:



Western blot analysis of various lysates using PAPD4 Rabbit pAb (TA379620) at 1:3000 dilution.

Secondary antibody: HRP-conjugated Goat anti-Rabbit IgG (H+L) (AS014) at 1:10000 dilution.

Lysates/proteins: 25µg per lane.

Blocking buffer: 3% nonfat dry milk in TBST.

Detection: ECL Basic Kit (RM00020).

Exposure time: 90s.