

## Product datasheet for **TA379620**

### TENT2 Rabbit Polyclonal Antibody

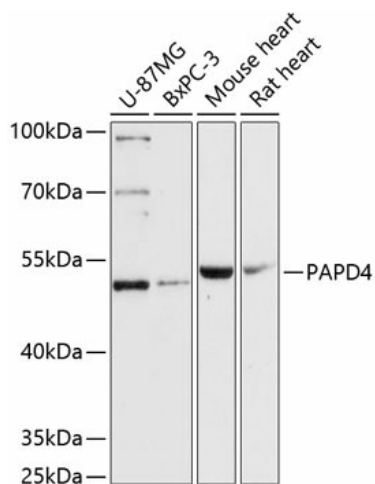
#### Product data:

Product Type:	Primary Antibodies
Applications:	WB
Recommended Dilution:	WB,1:500 - 1:2000
Reactivity:	Human, Mouse, Rat
Modifications:	Unmodified
Host:	Rabbit
Isotype:	IgG
Clonality:	Polyclonal
Immunogen:	Recombinant fusion protein containing a sequence corresponding to amino acids 1-300 of human PAPD4 (NP_776158.2).
Formulation:	Buffer: PBS with 0.02% sodium azide,50% glycerol,pH7.3.
Concentration:	lot specific
Purification:	Affinity purification
Conjugation:	Unconjugated
Storage:	Store at -20°C. Avoid freeze / thaw cycles.
Stability:	Shelf life: one year from despatch.
Predicted Protein Size:	55kDa/56kDa
Gene Name:	PAP associated domain containing 4
Database Link:	<a href="#">Entrez Gene 167153 Human Q6PIY7</a>
Background:	Cytoplasmic poly(A RNA polymerase that adds successive AMP monomers to the 3'-end of specific RNAs, forming a poly(A tail. In contrast to the canonical nuclear poly(A RNA polymerase, it only adds poly(A to selected cytoplasmic mRNAs. Does not play a role in replication-dependent histone mRNA degradation. Adds a single nucleotide to the 3' end of specific miRNAs, monoadenylation stabilizes and prolongs the activity of some but not all miRNAs.
Synonyms:	FLJ38499; GLD2; hGLD-2



[View online »](#)

## Product images:



Western blot analysis of extracts of various cell lines, using PAPD4 antibody (TA379620) at 1:3000 dilution. | Secondary antibody: HRP Goat Anti-Rabbit IgG (H+L) at 1:10000 dilution. | Lysates/proteins: 25ug per lane. | Blocking buffer: 3% nonfat dry milk in TBST. | Detection: ECL Basic Kit . | Exposure time: 90s.