

Product datasheet for **TA379614**

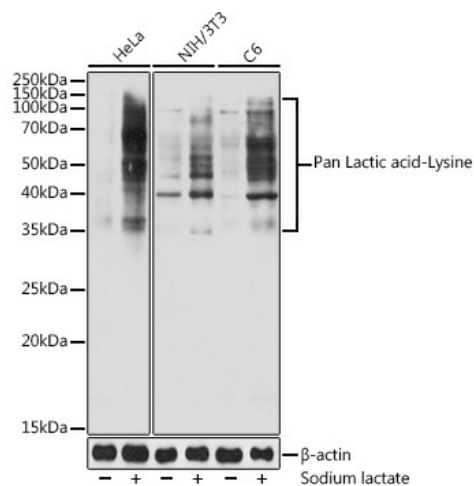
pan-Kla Rabbit Polyclonal Antibody

Product data:

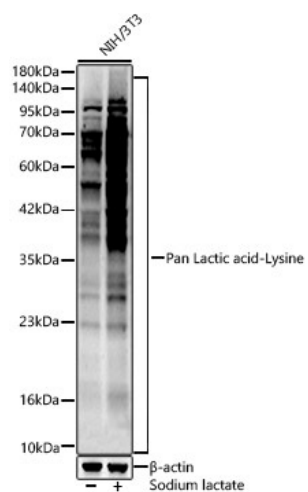
Product Type:	Primary Antibodies
Applications:	ELISA, WB
Recommended Dilution:	WB, 1:500 - 1:1000 ELISA, Recommended starting concentration is 1 µg/mL. Please optimize the concentration based on your specific assay requirements.
Reactivity:	Human, Mouse, Rat, Other (Wide Range)
Host:	Rabbit
Isotype:	IgG
Clonality:	Polyclonal
Formulation:	Buffer: PBS with 0.02% sodium azide, 50% glycerol, pH 7.3.
Concentration:	lot specific
Purification:	Affinity purification
Conjugation:	Unconjugated
Storage:	Store at -20°C. Avoid freeze / thaw cycles.
Stability:	Shelf life: one year from despatch.
Background:	Histone lysine lactation (Kla) is a newly discovered histone modification that regulates gene expression in macrophages. In M1 macrophages, lactic acid is derived from incompletely oxidized glucose and then produces lactyl-CoA, which is transferred via acetyltransferase p300 to the lysine tail of the histone. This modification is abundant in gene promoter regions that lack acetylation and are associated with gene expression activation.

[View online »](#)

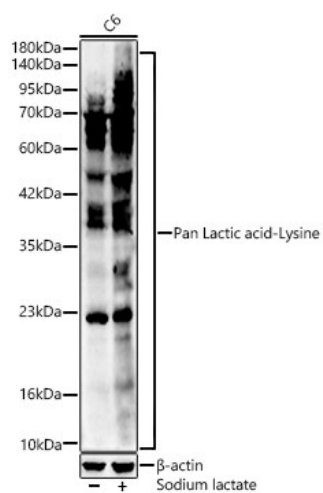
Product images:



Western blot analysis of lysates from MCF7 cells



Western blot analysis of lysates from NIH/3T3 cells



Western blot analysis of lysates from C6 cells