

Product datasheet for **TA379610S**

Symmetric-Di-Methyl Arginine Rabbit Polyclonal Antibody

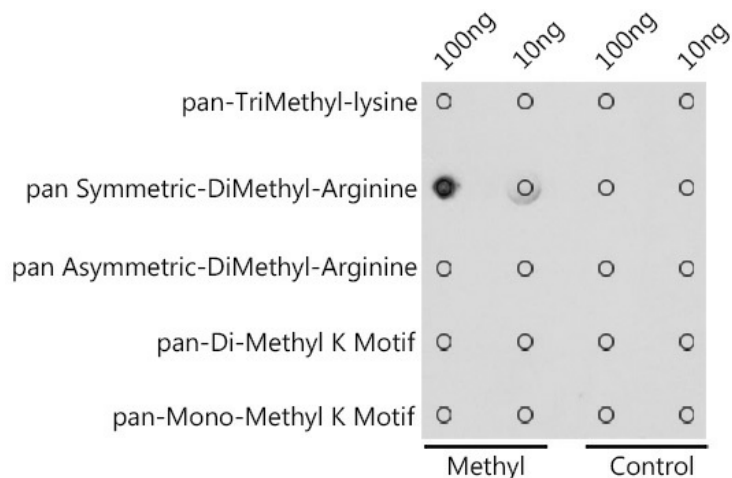
Product data:

Product Type:	Primary Antibodies
Applications:	WB
Recommended Dilution:	WB,1:500 - 1:2000
Reactivity:	Human, Mouse, Rat, Other (Wide Range)
Modifications:	pan Symmetric-DiMethyl-Arginine
Host:	Rabbit
Isotype:	IgG
Clonality:	Polyclonal
Immunogen:	A synthetic peptide corresponding to a sequence containing symmetric dimethylated R.
Formulation:	Buffer: PBS with 0.02% sodium azide,50% glycerol,pH7.3.
Concentration:	lot specific
Purification:	Affinity purification
Conjugation:	Unconjugated
Storage:	Store at -20°C. Avoid freeze / thaw cycles.
Stability:	Shelf life: one year from despatch.

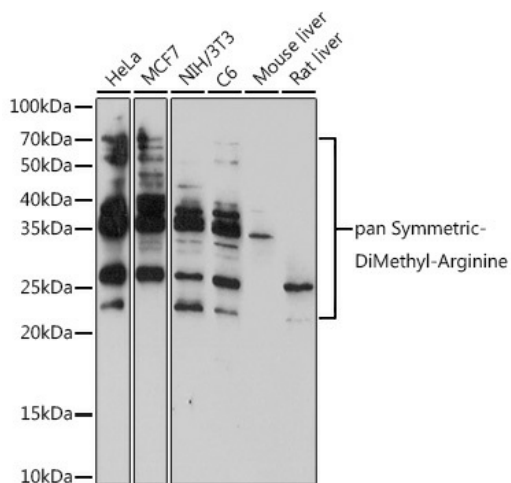


[View online »](#)

Product images:



Dot-blot analysis of all sorts of methylation peptides using pan Symmetric-DiMethyl-Arginine antibody ([TA379610]) at 1:1000 dilution.



Western blot analysis of extracts of various cell lines, using pan Symmetric-DiMethyl-Arginine antibody ([TA379610]) at 1:500 dilution. | Secondary antibody: HRP Goat Anti-Rabbit IgG (H+L) at 1:10000 dilution. | Lysates/proteins: 25ug per lane. | Blocking buffer: 3% nonfat dry milk in TBST. | Detection: ECL Basic Kit . | Exposure time: 180s.