

## Product datasheet for **TA379603**

### Tri-Methyl lysine Rabbit Polyclonal Antibody

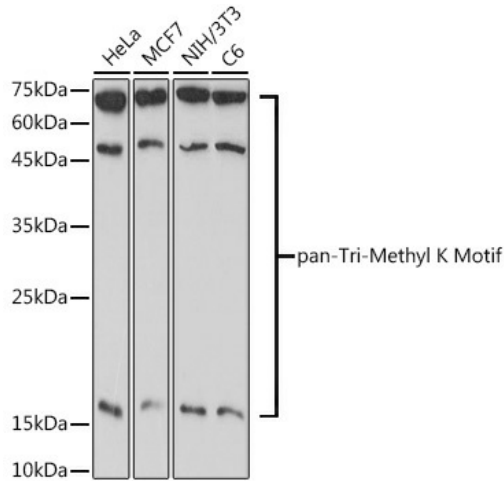
#### Product data:

Product Type:	Primary Antibodies
Applications:	ChIP, IP, WB
Recommended Dilution:	WB,1:500 - 1:2000 IP,1:50 - 1:200 ChIP,1:50 - 1:200
Reactivity:	Human, Mouse, Rat, Other (Wide Range)
Modifications:	pan-tri-Methyl K
Host:	Rabbit
Isotype:	IgG
Clonality:	Polyclonal
Immunogen:	A synthetic peptide corresponding to a sequence containing Tri-methylated K.
Formulation:	Buffer: PBS with 0.02% sodium azide,50% glycerol,pH7.3.
Concentration:	lot specific
Purification:	Affinity purification
Conjugation:	Unconjugated
Storage:	Store at -20°C. Avoid freeze / thaw cycles.
Stability:	Shelf life: one year from despatch.

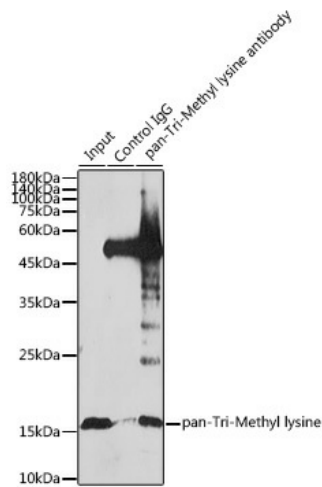


[View online »](#)

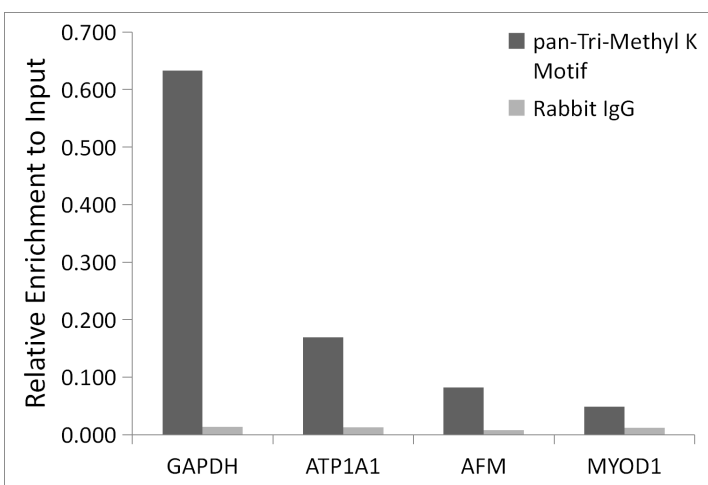
Product images:



Western blot analysis of extracts of various cell lines, using pan-Tri-Methyl K Motif antibody (TA379603) at 1:1000 dilution. | Secondary antibody: HRP Goat Anti-Rabbit IgG (H+L) at 1:10000 dilution. | Lysates/proteins: 25ug per lane. | Blocking buffer: 3% nonfat dry milk in TBST. | Detection: ECL Basic Kit . | Exposure time: 60s.



Immunoprecipitation analysis of 1.5mg extracts of HeLa cells using 30ug pan-Tri-Methyl lysine antibody (TA379603). Western blot was performed from the immunoprecipitate using TriMethyl-Histone H3-K27 antibody (A2363) at a dilution of 1:1000.



Chromatin immunoprecipitation analysis of extracts of HeLa cells, using pan-Tri-Methyl lysine antibody (TA379603) and rabbit IgG. The amount of immunoprecipitated DNA was checked by quantitative PCR. Histogram was constructed by the ratios of the immunoprecipitated DNA to the input.