

Product datasheet for **TA379602S**

pan Kme3 Rabbit Polyclonal Antibody

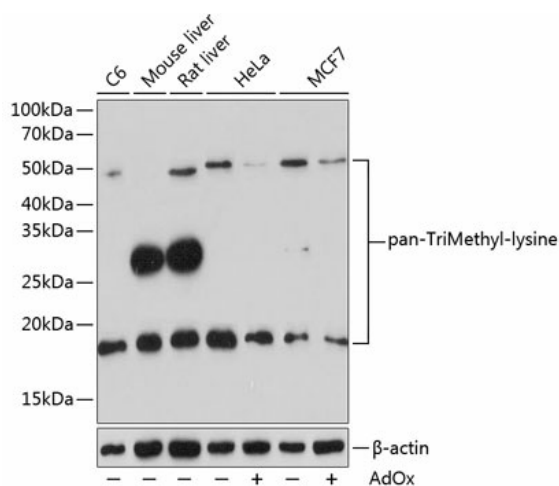
Product data:

| | |
|-----------------------|---|
| Product Type: | Primary Antibodies |
| Applications: | ELISA, WB |
| Recommended Dilution: | WB, 1:500 - 1:2000 ELISA, Recommended starting concentration is 1 µg/mL. Please optimize the concentration based on your specific assay requirements. |
| Reactivity: | Human, Mouse, Rat |
| Modifications: | pan-TriMethyl-lysine |
| Host: | Rabbit |
| Isotype: | IgG |
| Clonality: | Polyclonal |
| Formulation: | Buffer: PBS with 0.02% sodium azide, 50% glycerol, pH 7.3. |
| Concentration: | lot specific |
| Purification: | Affinity purification |
| Conjugation: | Unconjugated |
| Storage: | Store at -20°C. Avoid freeze / thaw cycles. |
| Stability: | Shelf life: one year from despatch. |
| Background: | Methylation of lysine residues is a common regulatory post-translational modification (PTM) that results in the mono-, di-, or tri-methylation of lysine at ε-amine groups by protein lysine methyltransferases (PKMTs). The post-translational ε-amino lysine methylated proteins is an important reversible modification which plays a vital role in the regulation of many cellular processes including chromatin dynamics and gene transcription. Methylation of lysine residues is modulated by specific counteractive enzymes including lysine methylases (KMTs) and demethylases (KDMs). Lysine trimethylation occurs in both histones and non-histone substrates. It has become promising targets for discovery of anti-cancer drugs. |



[View online »](#)

Product images:



Western blot analysis of various lysates using pan-TriMethyl-lysine pAb (TA379602S) at 1:500 dilution. HeLa and MCF7 cells were treated by ADOX (100 μ M) for 24 hours .
 Secondary antibody: HRP-conjugated Goat anti-Rabbit IgG (H+L) (AS014) at 1:10000 dilution.
 Lysates/proteins: 25 μ g per lane.
 Blocking buffer: 3% nonfat dry milk in TBST.
 Detection: ECL Enhanced Kit (RM00021).
 Exposure time: 3min.