

## Product datasheet for **TA379601**

### Di-Methyl lysine Rabbit Polyclonal Antibody

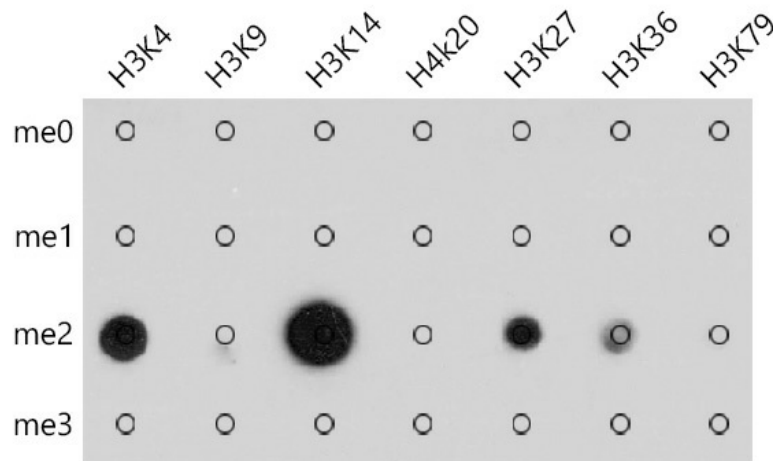
#### Product data:

Product Type:	Primary Antibodies
Applications:	ICC/IF, IHC, IP, WB
Recommended Dilution:	WB,1:500 - 1:2000 IHC,1:50 - 1:100 IF,1:50 - 1:100 IP,1:50 - 1:100
Reactivity:	Human, Mouse, Rat, Other (Wide Range)
Modifications:	Pan DiMethyl-lysine
Host:	Rabbit
Isotype:	IgG
Clonality:	Polyclonal
Immunogen:	A synthetic peptide corresponding to a sequence containing dimethylated K.
Formulation:	Buffer: PBS with 0.02% sodium azide,50% glycerol,pH7.3.
Concentration:	lot specific
Purification:	Affinity purification
Conjugation:	Unconjugated
Storage:	Store at -20°C. Avoid freeze / thaw cycles.
Stability:	Shelf life: one year from despatch.

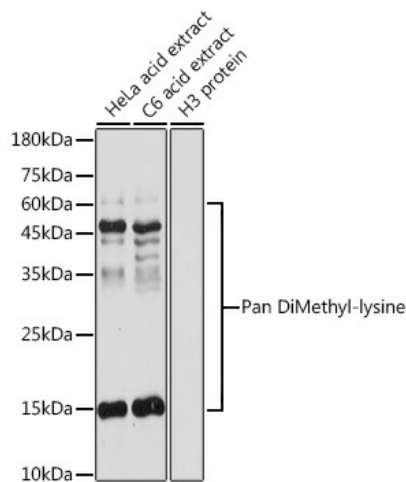


[View online »](#)

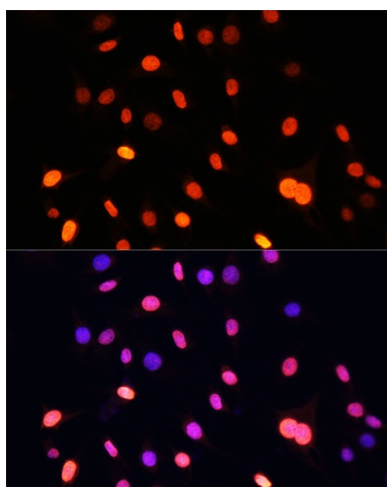
Product images:



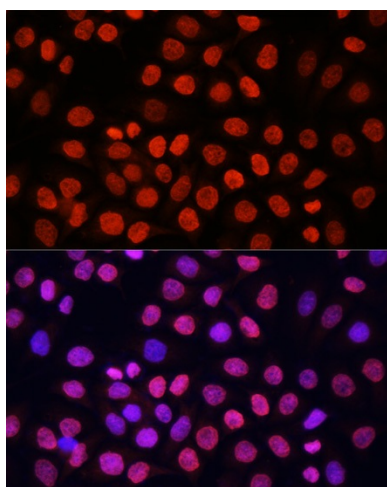
Dot-blot analysis of all sorts of methylation peptides using Pan DiMethyl-lysine antibody (TA379601) at 1:1000 dilution.



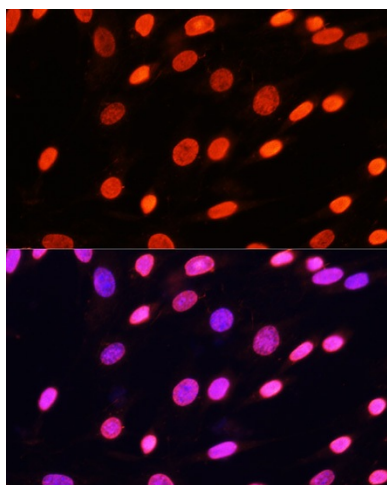
Western blot analysis of extracts of various cell lines, using Pan DiMethyl-lysine antibody (TA379601) at 1:500 dilution. | Secondary antibody: HRP Goat Anti-Rabbit IgG (H+L) at 1:10000 dilution. | Lysates/proteins: 25ug per lane. | Blocking buffer: 3% nonfat dry milk in TBST. | Detection: ECL Basic Kit . | Exposure time: 10s.



Immunofluorescence analysis of C6 cells using Pan DiMethyl-lysine antibody (TA379601) at dilution of 1:100. Blue: DAPI for nuclear staining.



Immunofluorescence analysis of HeLa cells using Pan DiMethyl-lysine antibody (TA379601) at dilution of 1:100. Blue: DAPI for nuclear staining.



Immunofluorescence analysis of NIH/3T3 cells using Pan DiMethyl-lysine antibody (TA379601) at dilution of 1:100. Blue: DAPI for nuclear staining.