

Product datasheet for **TA379598**

Acetyl-Lysin Rabbit Polyclonal Antibody

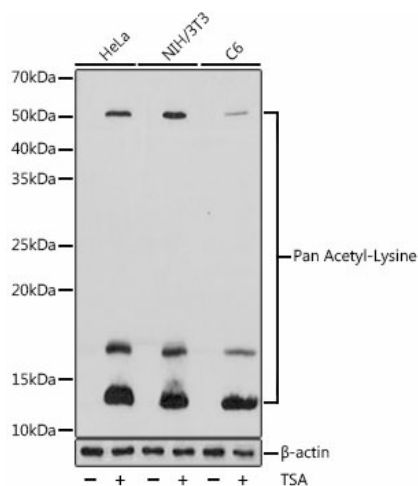
Product data:

Product Type:	Primary Antibodies
Applications:	IP, WB
Recommended Dilution:	WB,1:500 - 1:1000 IP,1:20 - 1:50
Reactivity:	Human, Mouse, Rat
Modifications:	Pan Acetyl-Lysine
Host:	Rabbit
Isotype:	IgG
Clonality:	Polyclonal
Immunogen:	A synthetic peptide corresponding to a sequence containing acetylated K.
Formulation:	Buffer: PBS with 0.02% sodium azide,50% glycerol,pH7.3.
Concentration:	lot specific
Purification:	Affinity purification
Conjugation:	Unconjugated
Storage:	Store at -20°C. Avoid freeze / thaw cycles.
Stability:	Shelf life: one year from despatch.



[View online »](#)

Product images:



Western blot analysis of extracts of various cell lines, using Pan Acetyl-Lysine antibody (TA379598) at 1:1000 dilution. HeLa cells and NIH/3T3 cells and C6 cells were treated by TSA (1 uM) at 37°C for 18 hours. | Secondary antibody: HRP Goat Anti-Rabbit IgG (H+L) at 1:10000 dilution. | Lysates/proteins: 25ug per lane. | Blocking buffer: 3% BSA. | Detection: ECL Basic Kit. | Exposure time: 1s.