

## Product datasheet for **TA379595**

### Palladin (PALLD) Rabbit Polyclonal Antibody

#### Product data:

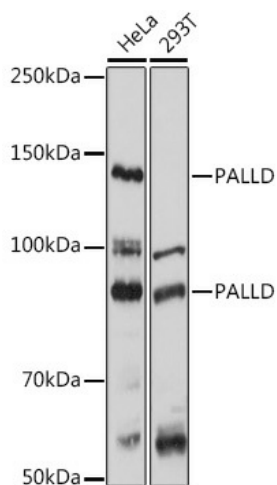
Product Type:	Primary Antibodies
Applications:	ICC/IF, IHC, IP, WB
Recommended Dilution:	WB,1:500 - 1:2000 IHC,1:50 - 1:200 IF,1:50 - 1:200 IP,1:50 - 1:200
Reactivity:	Human, Mouse, Rat
Modifications:	Unmodified
Host:	Rabbit
Isotype:	IgG
Clonality:	Polyclonal
Immunogen:	Recombinant fusion protein containing a sequence corresponding to amino acids 383-672 of human PALLD (NP_001159582.1).
Formulation:	Buffer: PBS with 0.02% sodium azide,50% glycerol,pH7.3.
Concentration:	lot specific
Purification:	Affinity purification
Conjugation:	Unconjugated
Storage:	Store at -20°C. Avoid freeze / thaw cycles.
Stability:	Shelf life: one year from despatch.
Predicted Protein Size:	42kDa/58kDa/73kDa/85-150kDa
Gene Name:	palladin, cytoskeletal associated protein
Database Link:	<a href="#">Entrez Gene 23022 Human Q8WX93</a>
Background:	This gene encodes a cytoskeletal protein that is required for organizing the actin cytoskeleton. The protein is a component of actin-containing microfilaments, and it is involved in the control of cell shape, adhesion, and contraction. Polymorphisms in this gene are associated with a susceptibility to pancreatic cancer type 1, and also with a risk for myocardial infarction. Alternative splicing results in multiple transcript variants.



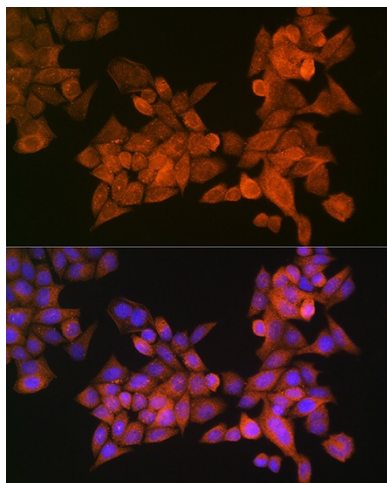
[View online »](#)

**Synonyms:** CGI-151; CGI151; FLJ22190; FLJ38193; FLJ39139; KIAA0992; MYN; myoneurin; palladin; PNCA1; SIH002

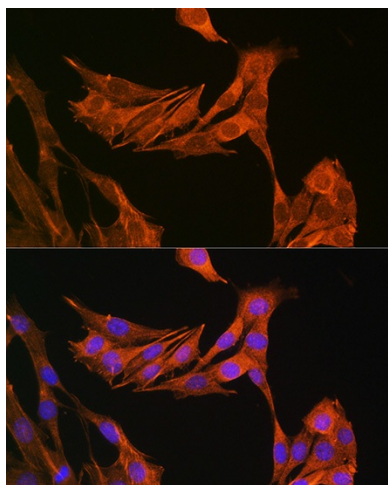
**Product images:**



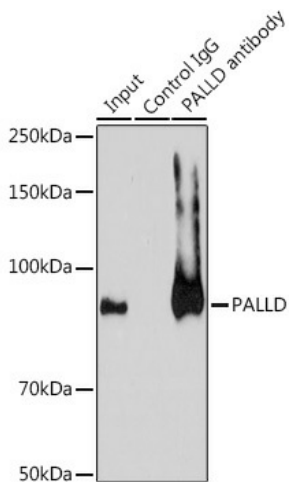
Western blot analysis of extracts of various cell lines, using PALLD antibody (TA379595) at 1:1000 dilution. | Secondary antibody: HRP Goat Anti-Rabbit IgG (H+L) at 1:10000 dilution. | Lysates/proteins: 25ug per lane. | Blocking buffer: 3% nonfat dry milk in TBST. | Detection: ECL Basic Kit . | Exposure time: 30s.



Immunofluorescence analysis of HeLa cells using PALLD Rabbit pAb (TA379595) at dilution of 1:100 (40x lens). Blue: DAPI for nuclear staining.



Immunofluorescence analysis of NIH-3T3 cells using PALLD Rabbit pAb (TA379595) at dilution of 1:100 (40x lens). Blue: DAPI for nuclear staining.



Immunoprecipitation analysis of 200ug extracts of A-549 cells using 3ug PALLD antibody (TA379595). Western blot was performed from the immunoprecipitate using PALLD antibody (TA379595) at a dilution of 1:1000.