

Product datasheet for **TA379589S**

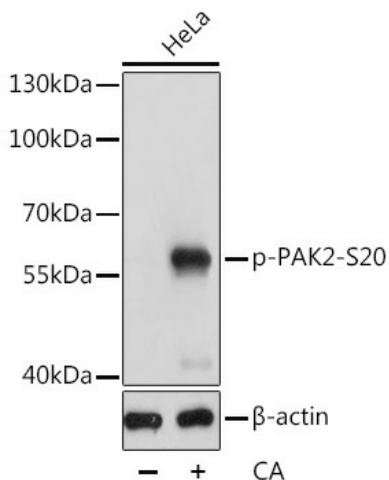
PAK2 Rabbit Polyclonal Antibody

Product data:

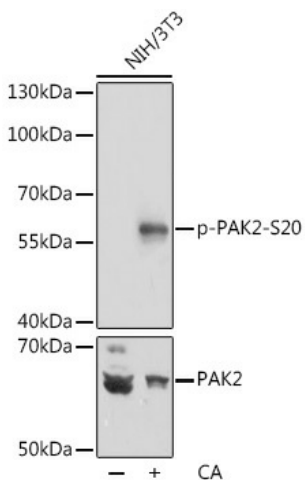
Product Type:	Primary Antibodies
Applications:	WB
Recommended Dilution:	WB,1:500 - 1:2000
Reactivity:	Human, Mouse
Modifications:	Phospho S20
Host:	Rabbit
Isotype:	IgG
Clonality:	Polyclonal
Immunogen:	A synthetic phosphorylated peptide around S20 of human PAK2 (NP_002568.2).
Formulation:	PBS with 0.05% proclin300,50% glycerol,pH7.3.
Concentration:	lot specific
Purification:	Affinity purification
Conjugation:	Unconjugated
Storage:	Store at -20°C. Avoid freeze / thaw cycles.
Stability:	Shelf life: one year from despatch.
Predicted Protein Size:	58kDa
Gene Name:	p21 (RAC1) activated kinase 2
Database Link:	Entrez Gene 5062 Human Q13177
Background:	The p21 activated kinases (PAK) are critical effectors that link Rho GTPases to cytoskeleton reorganization and nuclear signaling. The PAK proteins are a family of serine/threonine kinases that serve as targets for the small GTP binding proteins, CDC42 and RAC1, and have been implicated in a wide range of biological activities. The protein encoded by this gene is activated by proteolytic cleavage during caspase-mediated apoptosis, and may play a role in regulating the apoptotic events in the dying cell.
Synonyms:	Gamma-PAK; p58; PAK-2; PAK65; PAKgamma



[View online »](#)

Product images:


Western blot analysis of extracts of HeLa cells, using Phospho-PAK2-S20 antibody ([TA379589]) at 1:2000 dilution. HeLa cells were treated by Calyculin A (100nM) for 30 minutes after serum-starvation overnight. | Secondary antibody: HRP Goat Anti-Rabbit IgG (H+L) at 1:10000 dilution. | Lysates/proteins: 25ug per lane. | Blocking buffer: 3% BSA. | Detection: ECL Basic Kit . | Exposure time: 5s.



Western blot analysis of extracts of NIH/3T3 cells, using Phospho-PAK2-S20 pAb ([TA379589]) at 1:2000 dilution or PAK2 antibody (A7333). NIH/3T3 cells were treated by Calyculin A (100nM) for 30 minutes after serum-starvation overnight. | Secondary antibody: HRP Goat Anti-Rabbit IgG (H+L) at 1:10000 dilution. | Lysates/proteins: 25ug per lane. | Blocking buffer: 3% BSA. | Detection: ECL Basic Kit . | Exposure time: 5s.