

Product datasheet for **TA379587S**

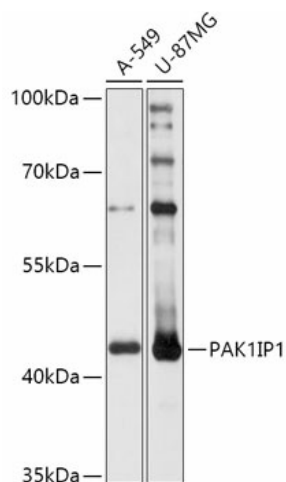
PAK1 interacting protein 1 (PAK1IP1) Rabbit Polyclonal Antibody

Product data:

Product Type:	Primary Antibodies
Applications:	ELISA, WB
Recommended Dilution:	WB, 1:500 - 1:2000 ELISA, Recommended starting concentration is 1 µg/mL. Please optimize the concentration based on your specific assay requirements.
Reactivity:	Human, Mouse
Modifications:	Unmodified
Host:	Rabbit
Isotype:	IgG
Clonality:	Polyclonal
Formulation:	Buffer: PBS with 0.02% sodium azide, 50% glycerol, pH 7.3.
Concentration:	lot specific
Purification:	Affinity purification
Conjugation:	Unconjugated
Storage:	Store at -20°C. Avoid freeze / thaw cycles.
Stability:	Shelf life: one year from despatch.
Predicted Protein Size:	44kDa
Gene Name:	PAK1 interacting protein 1
Database Link:	Entrez Gene 55003 Human Q9NWT1
Background:	Involved in regulation of signal transduction by p53 class mediator and ribosomal large subunit biogenesis. Located in nucleolus.
Synonyms:	bA421M1.5; FLJ20624; hPIP1; MAK11; PIP1; RP11-421M1.5; WDR84



[View online »](#)

Product images:


Western blot analysis of various lysates using PAK1IP1 Rabbit pAb (TA379587S) at 1:1000 dilution.

Secondary antibody: HRP-conjugated Goat anti-Rabbit IgG (H+L) (AS014) at 1:10000 dilution.

Lysates/proteins: 25µg per lane.

Blocking buffer: 3% nonfat dry milk in TBST.

Detection: ECL Basic Kit (RM00020).

Exposure time: 10s.