

## Product datasheet for **TA379549S**

### **P2RX4 Rabbit Polyclonal Antibody**

#### **Product data:**

|                                |  |
|--------------------------------|--|
| <b>Product Type:</b>           | Primary Antibodies   |
| <b>Applications:</b>           | ICC/IF, WB   |
| <b>Recommended Dilution:</b>   | WB,1:500 - 1:2000<br>IF,1:10 - 1:100   |
| <b>Reactivity:</b>             | Human, Mouse   |
| <b>Modifications:</b>          | Unmodified   |
| <b>Host:</b>                   | Rabbit   |
| <b>Isotype:</b>                | IgG  |
| <b>Clonality:</b>              | Polyclonal   |
| <b>Immunogen:</b>              | Recombinant fusion protein containing a sequence corresponding to amino acids 55-338 of human P2RX4 (NP_002551.2). |
| <b>Formulation:</b>            | Buffer: PBS with 0.02% sodium azide,50% glycerol,pH7.3.  |
| <b>Concentration:</b>          | lot specific   |
| <b>Purification:</b>           | Affinity purification  |
| <b>Conjugation:</b>            | Unconjugated   |
| <b>Storage:</b>                | Store at -20°C. Avoid freeze / thaw cycles.  |
| <b>Stability:</b>              | Shelf life: one year from despatch.  |
| <b>Predicted Protein Size:</b> | 40kDa/43kDa/45kDa  |
| <b>Gene Name:</b>              | purinergic receptor P2X 4  |
| <b>Database Link:</b>          | <a href="#">Entrez Gene 5025 Human Q99571</a>  |

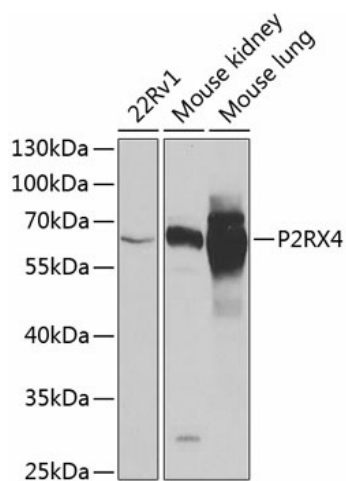
**Background:** The product of this gene belongs to the family of purinoceptors for ATP. This receptor functions as a ligand-gated ion channel with high calcium permeability. The main pharmacological distinction between the members of the purinoceptor family is the relative sensitivity to the antagonists suramin and PPADS. The product of this gene has the lowest sensitivity for these antagonists. Multiple alternatively spliced transcript variants, some protein-coding and some not protein-coding, have been found for this gene.



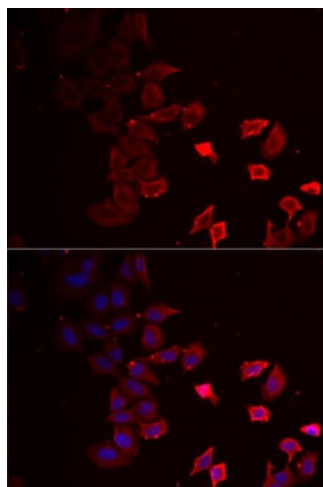
[View online »](#)

Synonyms: P2X4; P2X4R

### Product images:



Western blot analysis of extracts of various cell lines, using P2RX4 antibody ([TA379549]) at 1:1000 dilution. | Secondary antibody: HRP Goat Anti-Rabbit IgG (H+L) at 1:10000 dilution. | Lysates/proteins: 25ug per lane. | Blocking buffer: 3% nonfat dry milk in TBST. | Detection: ECL Basic Kit . | Exposure time: 30s.



Immunofluorescence analysis of MCF7 cells using P2RX4 antibody ([TA379549]). Blue: DAPI for nuclear staining.