

Product datasheet for **TA379522S**

OSTC Rabbit Polyclonal Antibody

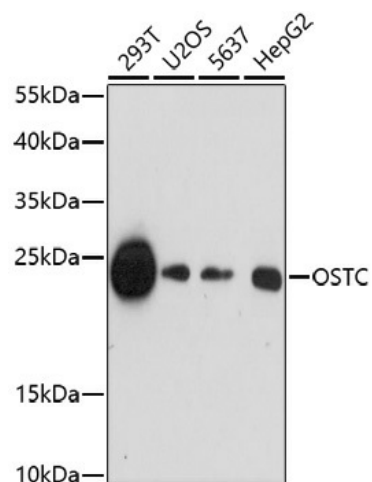
Product data:

| | |
|-------------------------|---|
| Product Type: | Primary Antibodies |
| Applications: | ELISA, WB |
| Recommended Dilution: | WB, 1:100 - 1:500 ELISA, Recommended starting concentration is 1 µg/mL. Please optimize the concentration based on your specific assay requirements. |
| Reactivity: | Human, Mouse, Rat |
| Host: | Rabbit |
| Isotype: | IgG |
| Clonality: | Polyclonal |
| Formulation: | PBS with 0.05% proclin300, 50% glycerol, pH 7.3. |
| Concentration: | lot specific |
| Purification: | Affinity purification |
| Conjugation: | Unconjugated |
| Storage: | Store at -20°C. Avoid freeze / thaw cycles. |
| Stability: | Shelf life: one year from despatch. |
| Predicted Protein Size: | 17kDa |
| Gene Name: | oligosaccharyltransferase complex subunit (non-catalytic) |
| Database Link: | Entrez Gene 58505 Human Q9NRPO |
| Background: | Predicted to contribute to dolichyl-diphosphooligosaccharide-protein glycotransferase activity. Predicted to be involved in protein N-linked glycosylation via asparagine. Part of oligosaccharyltransferase complex. |
| Synonyms: | DC2 |

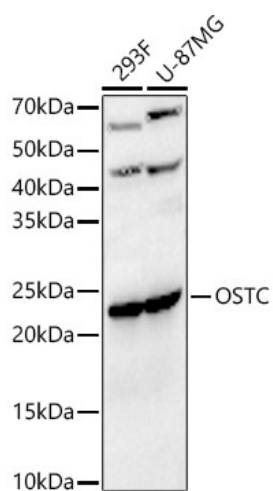


[View online »](#)

Product images:



Western blot analysis of various lysates



Western blot analysis of various lysates