

Product datasheet for **TA379522**

OSTC Rabbit Polyclonal Antibody

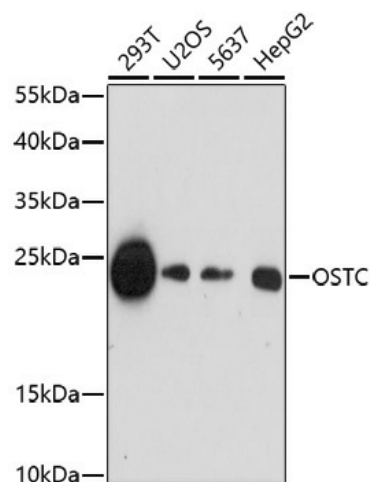
Product data:

Product Type:	Primary Antibodies
Applications:	WB
Recommended Dilution:	WB,1:500 - 1:2000
Reactivity:	Human, Mouse, Rat
Host:	Rabbit
Isotype:	IgG
Clonality:	Polyclonal
Immunogen:	A synthetic peptide corresponding to a sequence within amino acids 50 to the C-terminus of human OSTC (NP_067050.1).
Formulation:	PBS with 0.05% proclin300,50% glycerol,pH7.3.
Concentration:	lot specific
Purification:	Affinity purification
Conjugation:	Unconjugated
Storage:	Store at -20°C. Avoid freeze / thaw cycles.
Stability:	Shelf life: one year from despatch.
Gene Name:	oligosaccharyltransferase complex subunit (non-catalytic)
Database Link:	Entrez Gene 58505 Human Q9NRPO
Background:	Subunit of the oligosaccharyl transferase (OST complex that catalyzes the initial transfer of a defined glycan (Glc(3Man(9GlcNAc(2 in eukaryotes from the lipid carrier dolichol-pyrophosphate to an asparagine residue within an Asn-X-Ser/Thr consensus motif in nascent polypeptide chains, the first step in protein N-glycosylation. N-glycosylation occurs cotranslationally and the complex associates with the Sec61 complex at the channel-forming translocon complex that mediates protein translocation across the endoplasmic reticulum (ER. All subunits are required for a maximal enzyme activity. May be involved in N-glycosylation of APP (amyloid-beta precursor protein. Can modulate gamma-secretase cleavage of APP by enhancing endoproteolysis of PSEN1.
Synonyms:	DC2



[View online »](#)

Product images:



Western blot analysis of extracts of various cell lines, using OSTC antibody (TA379522) at 1:1000 dilution. | Secondary antibody: HRP Goat Anti-Rabbit IgG (H+L) at 1:10000 dilution. | Lysates/proteins: 25ug per lane. | Blocking buffer: 3% nonfat dry milk in TBST. | Detection: ECL Enhanced Kit . | Exposure time: 3min.