

## Product datasheet for **TA379514**

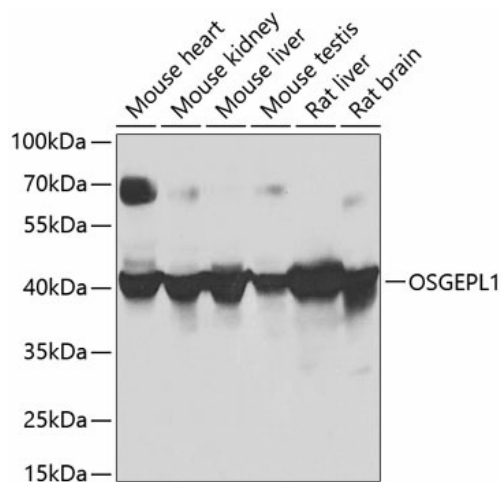
### OSGEPL1 Rabbit Polyclonal Antibody

#### Product data:

Product Type:	Primary Antibodies
Applications:	IHC, WB
Recommended Dilution:	WB, 1:500 - 1:2000 IHC, 1:50 - 1:100
Reactivity:	Human, Mouse, Rat
Modifications:	Unmodified
Host:	Rabbit
Isotype:	IgG
Clonality:	Polyclonal
Immunogen:	Recombinant fusion protein containing a sequence corresponding to amino acids 1-270 of human OSGEPL1 (NP_071748.2).
Formulation:	Buffer: PBS with 0.02% sodium azide, 50% glycerol, pH7.3.
Concentration:	lot specific
Purification:	Affinity purification
Conjugation:	Unconjugated
Storage:	Store at -20°C. Avoid freeze / thaw cycles.
Stability:	Shelf life: one year from despatch.
Predicted Protein Size:	32kDa/39kDa/45kDa
Gene Name:	O-sialoglycoprotein endopeptidase-like 1
Database Link:	<a href="#">Entrez Gene 64172 Human Q9H4B0</a>
Background:	Required for the formation of a threonylcarbamoyl group on adenosine at position 37 (t(6A37 in mitochondrial tRNAs that read codons beginning with adenine. Probably involved in the transfer of the threonylcarbamoyl moiety of threonylcarbamoyl-AMP (TC-AMP) to the N6 group of A37. Involved in mitochondrial genome maintenance.
Synonyms:	OSGEPL1



[View online »](#)

**Product images:**

Western blot analysis of extracts of various cell lines, using OSGEPL1 antibody (TA379514) at 1:1000 dilution. | Secondary antibody: HRP Goat Anti-Rabbit IgG (H+L) at 1:10000 dilution. | Lysates/proteins: 25ug per lane. | Blocking buffer: 3% nonfat dry milk in TBST. | Detection: ECL Basic Kit . | Exposure time: 30s.