

## Product datasheet for **TA379504**

### ORMDL3 Rabbit Polyclonal Antibody

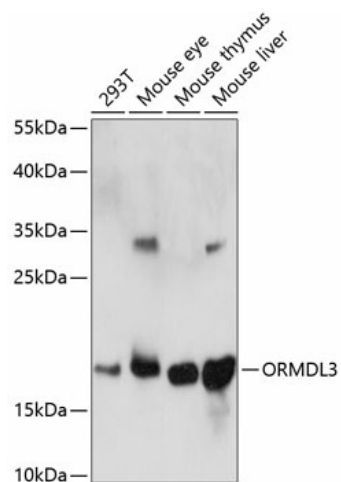
#### Product data:

|                         |  |
|-------------------------|--|
| Product Type:           | Primary Antibodies   |
| Applications:           | WB   |
| Recommended Dilution:   | WB,1:500 - 1:2000  |
| Reactivity:             | Human, Mouse   |
| Modifications:          | Unmodified   |
| Host:                   | Rabbit   |
| Isotype:                | IgG  |
| Clonality:              | Polyclonal   |
| Immunogen:              | A synthetic peptide corresponding to a sequence within amino acids 1-100 of human ORMDL3 (NP_644809.1).                          |
| Formulation:            | Buffer: PBS with 0.02% sodium azide,50% glycerol,pH7.3.  |
| Concentration:          | lot specific   |
| Purification:           | Affinity purification  |
| Conjugation:            | Unconjugated   |
| Storage:                | Store at -20°C. Avoid freeze / thaw cycles.  |
| Stability:              | Shelf life: one year from despatch.  |
| Predicted Protein Size: | 15kDa/17kDa  |
| Gene Name:              | ORMDL sphingolipid biosynthesis regulator 3  |
| Database Link:          | <a href="#">Entrez Gene 94103 Human Q8N138</a>   |
| Background:             | Negative regulator of sphingolipid synthesis. May indirectly regulate endoplasmic reticulum-mediated Ca <sup>2+</sup> signaling. |
| Synonyms:               | OTTHUMP00000164334   |



[View online »](#)

## Product images:



Western blot analysis of extracts of various cell lines, using ORMDL3 antibody (TA379504) at 1:1000 dilution. | Secondary antibody: HRP Goat Anti-Rabbit IgG (H+L) at 1:10000 dilution. | Lysates/proteins: 25ug per lane. | Blocking buffer: 3% nonfat dry milk in TBST. | Detection: ECL Enhanced Kit. | Exposure time: 60s.