

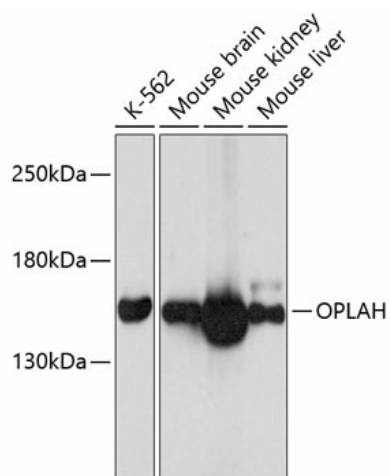
Product datasheet for **TA379476S**

OPLAH Rabbit Polyclonal Antibody

Product data:

Product Type:	Primary Antibodies
Applications:	ELISA, WB
Recommended Dilution:	WB, 1:500 - 1:2000 ELISA, Recommended starting concentration is 1 µg/mL. Please optimize the concentration based on your specific assay requirements.
Reactivity:	Human, Mouse, Rat
Modifications:	Unmodified
Host:	Rabbit
Isotype:	IgG
Clonality:	Polyclonal
Formulation:	Buffer: PBS with 0.02% sodium azide, 50% glycerol, pH 7.3.
Concentration:	lot specific
Purification:	Affinity purification
Conjugation:	Unconjugated
Storage:	Store at -20°C. Avoid freeze / thaw cycles.
Stability:	Shelf life: one year from despatch.
Predicted Protein Size:	137kDa
Gene Name:	5-oxoprolinase (ATP-hydrolysing)
Database Link:	Entrez Gene 26873 Human O14841
Background:	The protein encoded by this gene acts as a homodimer, using ATP hydrolysis to catalyze the conversion of 5-oxo-L-proline to L-glutamate. Defects in this gene are a cause of 5-oxoprolinase deficiency (OPLAHD).
Synonyms:	5-OPase; 5-oxo-L-prolinase; DKFZp434H244; OPLA; Pyroglutamase


[View online »](#)

Product images:


Western blot analysis of various lysates using OPLAH Rabbit pAb (TA379476) at 1:3000 dilution.
 Secondary antibody: HRP-conjugated Goat anti-Rabbit IgG (H+L) (AS014) at 1:10000 dilution.
 Lysates/proteins: 25µg per lane.
 Blocking buffer: 3% nonfat dry milk in TBST.
 Detection: ECL Basic Kit (RM00020).
 Exposure time: 1s.