

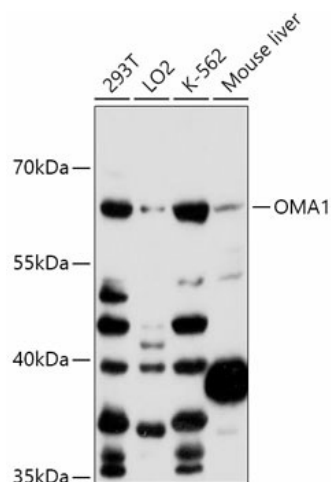
Product datasheet for **TA379465**

OMA1 Rabbit Polyclonal Antibody

Product data:

Product Type:	Primary Antibodies
Applications:	ELISA, WB
Recommended Dilution:	WB, 1:500 - 1:2000 ELISA, Recommended starting concentration is 1 µg/mL. Please optimize the concentration based on your specific assay requirements.
Reactivity:	Human, Mouse
Modifications:	Unmodified
Host:	Rabbit
Isotype:	IgG
Clonality:	Polyclonal
Formulation:	Buffer: PBS with 0.01% thimerosal, 50% glycerol, pH7.3.
Concentration:	lot specific
Purification:	Affinity purification
Conjugation:	Unconjugated
Storage:	Store at -20°C. Avoid freeze / thaw cycles.
Stability:	Shelf life: one year from despatch.
Predicted Protein Size:	60kDa
Gene Name:	OMA1 zinc metallopeptidase
Database Link:	Entrez Gene 115209 Human Q96E52
Background:	Enables metalloendopeptidase activity. Involved in several processes, including HRI-mediated signaling; proteolysis; and regulation of mitochondrion organization. Located in mitochondrial inner membrane.
Synonyms:	2010001O09Rik; DAB1; FLJ33782; MPRP-1; MPRP1; YKR087C; ZMPOMA1


[View online »](#)

Product images:


Western blot analysis of various lysates using OMA1 Rabbit pAb (TA379465) at 1:1000 dilution. Secondary antibody: HRP-conjugated Goat anti-Rabbit IgG (H+L) (AS014) at 1:10000 dilution. Lysates/proteins: 25µg per lane. Blocking buffer: 3% nonfat dry milk in TBST. Detection: ECL Basic Kit (RM00020). Exposure time: 60s.