

Product datasheet for **TA379459S**

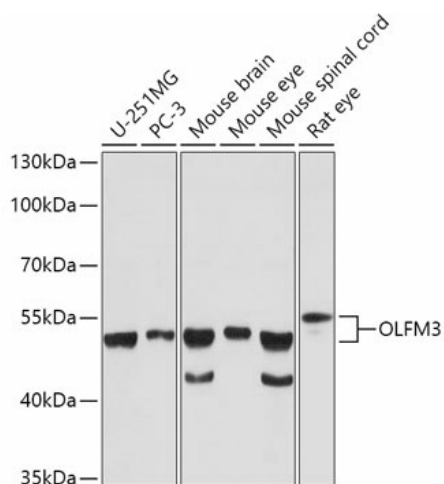
Olfm3 Rabbit Polyclonal Antibody

Product data:

Product Type:	Primary Antibodies
Applications:	ELISA, WB
Recommended Dilution:	WB, 1:500 - 1:2000 ELISA, Recommended starting concentration is 1 µg/mL. Please optimize the concentration based on your specific assay requirements.
Reactivity:	Human, Mouse, Rat
Host:	Rabbit
Isotype:	IgG
Clonality:	Polyclonal
Formulation:	Buffer: PBS with 0.02% sodium azide, 50% glycerol, pH 7.3.
Concentration:	lot specific
Purification:	Affinity purification
Conjugation:	Unconjugated
Storage:	Store at -20°C. Avoid freeze / thaw cycles.
Stability:	Shelf life: one year from despatch.
Gene Name:	olfactomedin 3
Database Link:	Entrez Gene 229759 Mouse P63056
Background:	Predicted to be involved in eye photoreceptor cell development. Located in Golgi apparatus and extracellular space. Part of AMPA glutamate receptor complex. Is expressed in brain; eye; and head. Orthologous to human OLFM3 (olfactomedin 3).
Synonyms:	NOE3; NOELIN3; NOELIN3_V1; NOELIN3_V2; NOELIN3_V3; NOELIN3_V4; NOELIN3_V5; NOELIN3_V6; Olfactomedin-3; OPTIMEDIN



[View online »](#)

Product images:


Western blot analysis of various lysates using OLFM3 Rabbit pAb (TA379459) at 1:1000 dilution.

Secondary antibody: HRP-conjugated Goat anti-Rabbit IgG (H+L) (AS014) at 1:10000 dilution.

Lysates/proteins: 25µg per lane.

Blocking buffer: 3% nonfat dry milk in TBST.

Detection: ECL Basic Kit (RM00020).

Exposure time: 10s.