

Product datasheet for **TA379459**

Olfm3 Rabbit Polyclonal Antibody

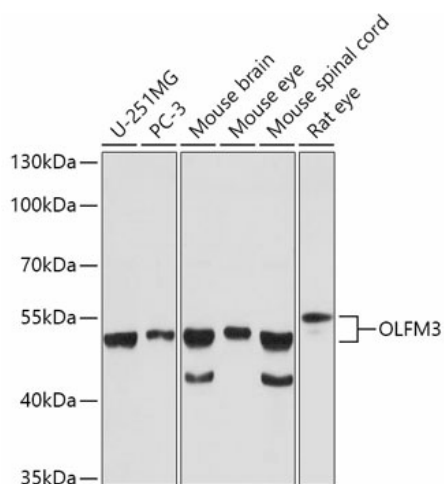
Product data:

Product Type:	Primary Antibodies
Applications:	WB
Recommended Dilution:	WB,1:500 - 1:2000
Reactivity:	Human, Mouse, Rat
Host:	Rabbit
Isotype:	IgG
Clonality:	Polyclonal
Immunogen:	Recombinant protein of human OLFM3.
Formulation:	Buffer: PBS with 0.02% sodium azide,50% glycerol,pH7.3.
Concentration:	lot specific
Purification:	Affinity purification
Conjugation:	Unconjugated
Storage:	Store at -20°C. Avoid freeze / thaw cycles.
Stability:	Shelf life: one year from despatch.
Gene Name:	olfactomedin 3
Database Link:	Entrez Gene 229759 Mouse P63056
Synonyms:	NOE3; NOELIN3; NOELIN3_V1; NOELIN3_V2; NOELIN3_V3; NOELIN3_V4; NOELIN3_V5; NOELIN3_V6; Olfactomedin-3; OPTIMEDIN



[View online »](#)

Product images:



Western blot analysis of extracts of various cell lines, using OLFM3 antibody (TA379459) at 1:1000 dilution. | Secondary antibody: HRP Goat Anti-Rabbit IgG (H+L) at 1:10000 dilution. | Lysates/proteins: 25ug per lane. | Blocking buffer: 3% nonfat dry milk in TBST. | Detection: ECL Basic Kit . | Exposure time: 10s.