

Product datasheet for **TA379451S**

OGFOD1 Rabbit Polyclonal Antibody

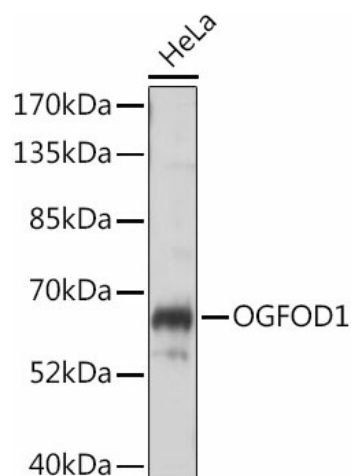
Product data:

Product Type:	Primary Antibodies
Applications:	ELISA, WB
Recommended Dilution:	WB, 1:500 - 1:2000 ELISA, Recommended starting concentration is 1 µg/mL. Please optimize the concentration based on your specific assay requirements.
Reactivity:	Human
Modifications:	Unmodified
Host:	Rabbit
Isotype:	IgG
Clonality:	Polyclonal
Formulation:	Buffer: PBS with 0.02% sodium azide, 50% glycerol, pH 7.3.
Concentration:	lot specific
Purification:	Affinity purification
Conjugation:	Unconjugated
Storage:	Store at -20°C. Avoid freeze / thaw cycles.
Stability:	Shelf life: one year from despatch.
Predicted Protein Size:	63kDa
Gene Name:	2-oxoglutarate and iron dependent oxygenase domain containing 1
Database Link:	Entrez Gene 55239 Human Q8N543
Background:	Enables peptidyl-proline 3-dioxygenase activity. Involved in several processes, including peptidyl-proline hydroxylation; regulation of translational termination; and stress granule assembly. Located in cytoplasmic stress granule; cytosol; and nucleoplasm.
Synonyms:	FLJ10826; KIAA1612; TPA1



[View online »](#)

Product images:



Western blot analysis of lysates from HeLa cells