

## Product datasheet for **TA379450**

### OGDHL Rabbit Polyclonal Antibody

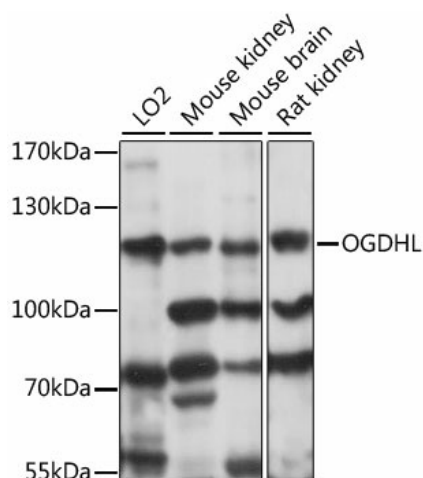
#### Product data:

Product Type:	Primary Antibodies
Applications:	IHC, WB
Recommended Dilution:	WB,1:200 - 1:2000 IHC,1:50 - 1:200
Reactivity:	Human, Mouse, Rat
Modifications:	Unmodified
Host:	Rabbit
Isotype:	IgG
Clonality:	Polyclonal
Immunogen:	Recombinant fusion protein containing a sequence corresponding to amino acids 1-110 of human OGDHL (NP_060715.2).
Formulation:	Buffer: PBS with 0.02% sodium azide,50% glycerol,pH7.3.
Concentration:	lot specific
Purification:	Affinity purification
Conjugation:	Unconjugated
Storage:	Store at -20°C. Avoid freeze / thaw cycles.
Stability:	Shelf life: one year from despatch.
Predicted Protein Size:	91kDa/108kDa/114kDa
Gene Name:	oxoglutarate dehydrogenase-like
Database Link:	<a href="#">Entrez Gene 55753 Human Q9ULD0</a>
Background:	The protein encoded by this gene is similar to oxoglutarate dehydrogenase (OGDH) of the OGDH complex, which degrades glucose and glutamate. This gene encodes several isoforms, including some that appear to localize to mitochondria. The encoded protein down-regulates the AKT signaling cascade and can suppress the growth of cervical cancer cells.
Synonyms:	FLJ10851; KIAA1290



[View online »](#)

## Product images:



Western blot analysis of extracts of various cell lines, using OGDHL antibody (TA379450) at 1:1000 dilution. | Secondary antibody: HRP Goat Anti-Rabbit IgG (H+L) at 1:10000 dilution. | Lysates/proteins: 25ug per lane. | Blocking buffer: 3% nonfat dry milk in TBST. | Detection: ECL Basic Kit . | Exposure time: 5s.