

## Product datasheet for **TA379411**

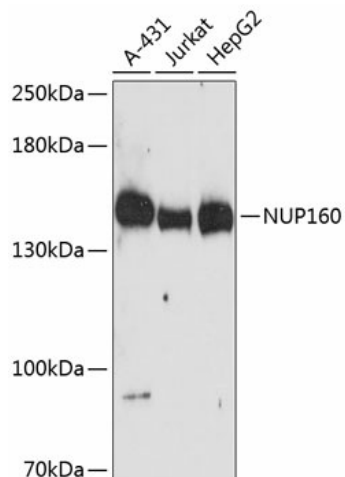
### **NUP160 Rabbit Polyclonal Antibody**

#### **Product data:**

Product Type:	Primary Antibodies
Applications:	ELISA, WB
Recommended Dilution:	WB, 1:500 - 1:2000 ELISA, Recommended starting concentration is 1 µg/mL. Please optimize the concentration based on your specific assay requirements.
Reactivity:	Human
Modifications:	Unmodified
Host:	Rabbit
Isotype:	IgG
Clonality:	Polyclonal
Formulation:	Buffer: PBS with 0.01% thimerosal, 50% glycerol, pH7.3.
Concentration:	lot specific
Purification:	Affinity purification
Conjugation:	Unconjugated
Storage:	Store at -20°C. Avoid freeze / thaw cycles.
Stability:	Shelf life: one year from despatch.
Predicted Protein Size:	162kDa
Gene Name:	nucleoporin 160kDa
Database Link:	<a href="#">Entrez Gene 23279 Human Q12769</a>
Background:	A structural constituent of nuclear pore. Involved in mRNA export from nucleus and nephron development. Part of nuclear pore outer ring. Colocalizes with kinetochore. Implicated in nephrotic syndrome type 19.
Synonyms:	DKFZp686M14102; FLJ22583; KIAA0197; MGC150678; MGC150679; NUP120



[View online »](#)

**Product images:**


Western blot analysis of various lysates using NUP160 Rabbit pAb (TA379411) at 1:3000 dilution. Secondary antibody: HRP-conjugated Goat anti-Rabbit IgG (H+L) (AS014) at 1:10000 dilution. Lysates/proteins: 25µg per lane. Blocking buffer: 3% nonfat dry milk in TBST. Detection: ECL Enhanced Kit (RM00021). Exposure time: 180s.