

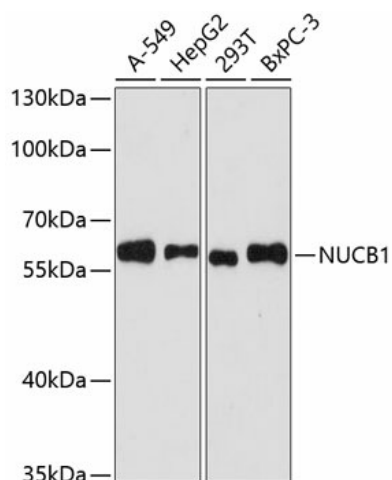
Product datasheet for **TA379386S**

Nucleobindin 1 (NUCB1) Rabbit Polyclonal Antibody

Product data:

Product Type:	Primary Antibodies
Applications:	ELISA, ICC/IF, WB
Recommended Dilution:	WB, 1:500 - 1:2000 IF/ICC, 1:50 - 1:100 ELISA, Recommended starting concentration is 1 µg/mL. Please optimize the concentration based on your specific assay requirements.
Reactivity:	Human, Mouse, Rat
Modifications:	Unmodified
Host:	Rabbit
Isotype:	IgG
Clonality:	Polyclonal
Formulation:	Buffer: PBS with 0.02% sodium azide, 50% glycerol, pH 7.3.
Concentration:	lot specific
Purification:	Affinity purification
Conjugation:	Unconjugated
Storage:	Store at -20°C. Avoid freeze / thaw cycles.
Stability:	Shelf life: one year from despatch.
Predicted Protein Size:	54kDa
Gene Name:	nucleobindin 1
Database Link:	Entrez Gene 4924 Human Q02818
Background:	This gene encodes a member of a small calcium-binding EF-hand protein family. The encoded protein is thought to have a key role in Golgi calcium homeostasis and Ca(2+)-regulated signal transduction events.
Synonyms:	CALNUC; DKFZp686A15286; FLJ40471; NUC; OTTHUMP00000201848


[View online »](#)

Product images:


Western blot analysis of various lysates using [KO Validated] NUCB1 Rabbit pAb (TA379386) at 1:3000 dilution.

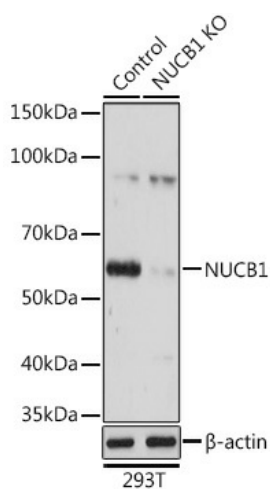
Secondary antibody: HRP-conjugated Goat anti-Rabbit IgG (H+L) (AS014) at 1:10000 dilution.

Lysates/proteins: 25µg per lane.

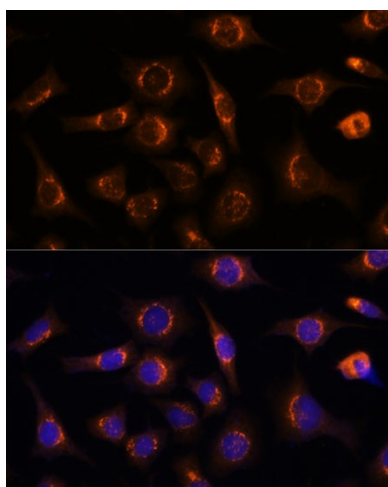
Blocking buffer: 3% nonfat dry milk in TBST.

Detection: ECL Basic Kit (RM00020).

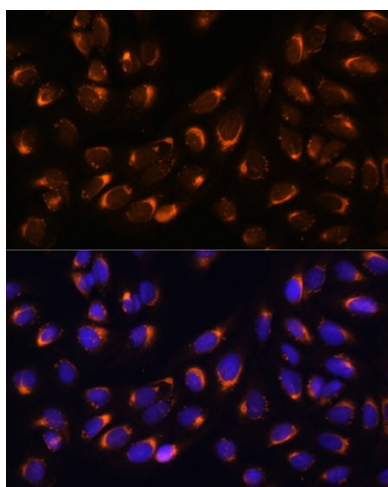
Exposure time: 90s.



Western blot analysis of lysates from wild type (WT) and NUCB1 knockout (KO) 293T cells



Immunofluorescence analysis of L929 cells using [KO Validated] NUCB1 Rabbit pAb ([TA379386]) at dilution of 1:100 (40x lens). Secondary antibody: Cy3-conjugated Goat anti-Rabbit IgG (H+L) (AS007) at 1:500 dilution. Blue: DAPI for nuclear staining.



Immunofluorescence analysis of U-2 OS cells using [KO Validated] NUCB1 Rabbit pAb ([TA379386]) at dilution of 1:100 (40x lens). Secondary antibody: Cy3-conjugated Goat anti-Rabbit IgG (H+L) (AS007) at 1:500 dilution. Blue: DAPI for nuclear staining.