

Product datasheet for **TA379364**

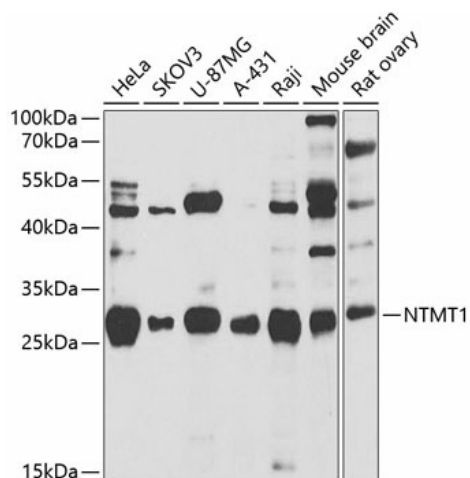
METTL11A (NTMT1) Rabbit Polyclonal Antibody

Product data:

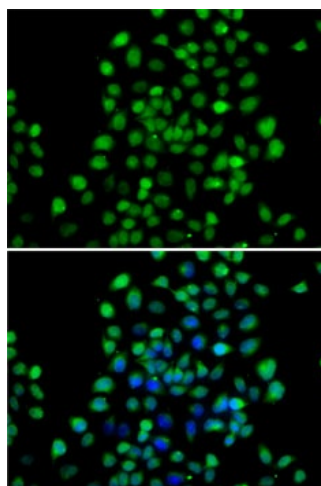
Product Type:	Primary Antibodies
Applications:	ICC/IF, WB
Recommended Dilution:	WB,1:500 - 1:2000 IF,1:50 - 1:100
Reactivity:	Human, Mouse, Rat
Modifications:	Unmodified
Host:	Rabbit
Isotype:	IgG
Clonality:	Polyclonal
Immunogen:	Recombinant fusion protein containing a sequence corresponding to amino acids 1-223 of human NTMT1 (NP_054783.2).
Formulation:	Buffer: PBS with 0.02% sodium azide,50% glycerol,pH7.3.
Concentration:	lot specific
Purification:	Affinity purification
Conjugation:	Unconjugated
Storage:	Store at -20°C. Avoid freeze / thaw cycles.
Stability:	Shelf life: one year from despatch.
Predicted Protein Size:	15kDa/25kDa
Gene Name:	N-terminal Xaa-Pro-Lys N-methyltransferase 1
Database Link:	Entrez Gene 28989 Human Q9BV86
Background:	The METTL11A gene encodes an N-terminal methyltransferase for the RAN (MIM 601179) guanine nucleotide exchange factor regulator of chromosome condensation 1 (RCC1; MIM 179710). METTL11A enzyme alpha-N-methylates other protein targets such as SET (MIM 600960) and RB (MIM 180200).[supplied by OMIM, Nov 2010]
Synonyms:	2610205E22Rik; AL033331; AL033332; Mettl11a; NTM1A; RGD1306582; RP23-221O14.3



[View online »](#)

Product images:


Western blot analysis of extracts of various cell lines, using NTMT1 antibody (TA379364) at 1:1000 dilution. | Secondary antibody: HRP Goat Anti-Rabbit IgG (H+L) at 1:10000 dilution. | Lysates/proteins: 25ug per lane. | Blocking buffer: 3% nonfat dry milk in TBST. | Detection: ECL Basic Kit . | Exposure time: 60s.



Immunofluorescence analysis of A-549 cells using NTMT1 antibody (TA379364). Blue: DAPI for nuclear staining.