

Product datasheet for **TA379346**

3C-like Proteinase Rabbit Polyclonal Antibody

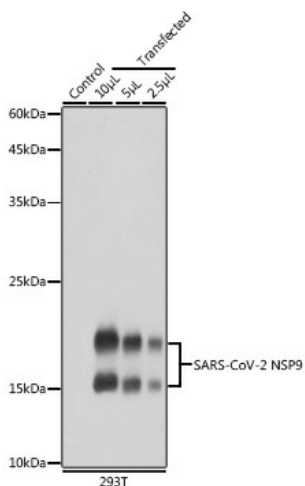
Product data:

Product Type:	Primary Antibodies
Applications:	WB
Recommended Dilution:	WB,1:500 - 1:2000
Reactivity:	SARS-CoV-2
Host:	Rabbit
Isotype:	IgG
Clonality:	Polyclonal
Immunogen:	Recombinant fusion protein of SARS-CoV-2 NSP9.
Formulation:	Buffer: PBS with 0.02% sodium azide,50% glycerol,pH7.3.
Concentration:	lot specific
Purification:	Affinity purification
Conjugation:	Unconjugated
Storage:	Store at -20°C. Avoid freeze / thaw cycles.
Stability:	Shelf life: one year from despatch.
Database Link:	Entrez Gene 43740578 SARS-CoV-2 P0DTD1
Background:	[Replicase polyprotein 1ab]: Multifunctional protein involved in the transcription and replication of viral RNAs. Contains the proteinases responsible for the cleavages of the polyprotein.



[View online »](#)

Product images:



Western blot analysis of extracts of normal 293T cells and 293T transfected with NSP9 Protein, using SARS-CoV-2 NSP9 antibody (TA379346) at 1:5000 dilution. | Secondary antibody: HRP Goat Anti-Rabbit IgG (H+L) at 1:10000 dilution. | Lysates/proteins: 25ug per lane. | Blocking buffer: 3% nonfat dry milk in TBST. | Detection: ECL Basic Kit . | Exposure time: 1s.