

Product datasheet for **TA379329S**

NSFL1C Rabbit Polyclonal Antibody

Product data:

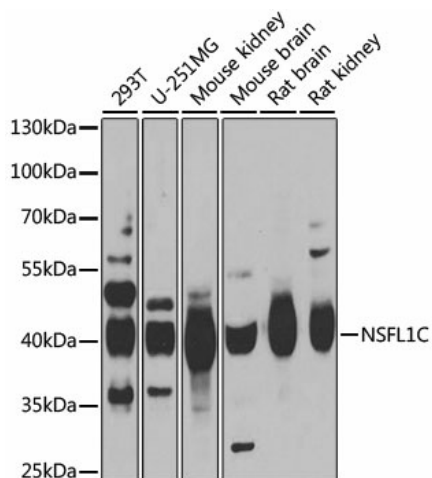
Product Type:	Primary Antibodies
Applications:	ICC/IF, IP, WB
Recommended Dilution:	WB,1:500 - 1:2000 IF,1:50 - 1:200 IP,1:50 - 1:100
Reactivity:	Human, Mouse, Rat
Modifications:	Unmodified
Host:	Rabbit
Isotype:	IgG
Clonality:	Polyclonal
Immunogen:	Recombinant fusion protein containing a sequence corresponding to amino acids 1-185 of human NSFL1C (NP_057227.2).
Formulation:	Buffer: PBS with 0.02% sodium azide,50% glycerol,pH7.3.
Concentration:	lot specific
Purification:	Affinity purification
Conjugation:	Unconjugated
Storage:	Store at -20°C. Avoid freeze / thaw cycles.
Stability:	Shelf life: one year from despatch.
Predicted Protein Size:	28kDa/37kDa/40kDa
Gene Name:	NSFL1 cofactor
Database Link:	Entrez Gene 55968 Human Q9UNZ2
Background:	N-ethylmaleimide-sensitive factor (NSF) and valosin-containing protein (p97) are two ATPases known to be involved in transport vesicle/target membrane fusion and fusions between membrane compartments. A trimer of the protein encoded by this gene binds a hexamer of cytosolic p97 and is required for p97-mediated regrowth of Golgi cisternae from mitotic Golgi fragments. Alternative splicing results in multiple transcript variants. A related pseudogene has been identified on chromosome 8.



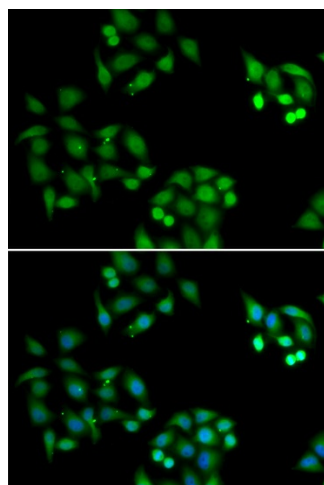
[View online »](#)

Synonyms: dj776F14.1; MGC3347; p47; UBX1; UBXD10; UBXN2C

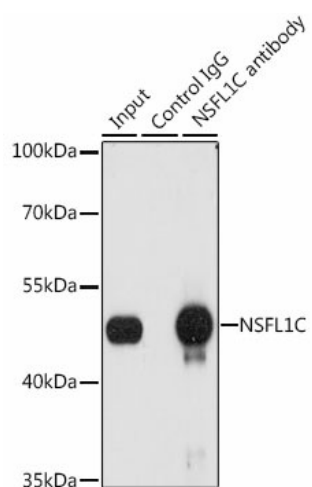
Product images:



Western blot analysis of extracts of various cell lines, using NSFL1^{°C} antibody ([TA379329]) at 1:1000 dilution. | Secondary antibody: HRP Goat Anti-Rabbit IgG (H+L) at 1:10000 dilution. | Lysates/proteins: 25ug per lane. | Blocking buffer: 3% nonfat dry milk in TBST. | Detection: ECL Basic Kit . | Exposure time: 1s.



Immunofluorescence analysis of HeLa cells using NSFL1^{°C} antibody ([TA379329]). Blue: DAPI for nuclear staining.



Immunoprecipitation analysis of 200ug extracts of A-549 cells, using 3 ug NSFL1[°]C antibody ([TA379329]). Western blot was performed from the immunoprecipitate using NSFL1[°]C antibody ([TA379329]) at a dilution of 1:1000.