

Product datasheet for **TA379328S**

NSF Rabbit Polyclonal Antibody

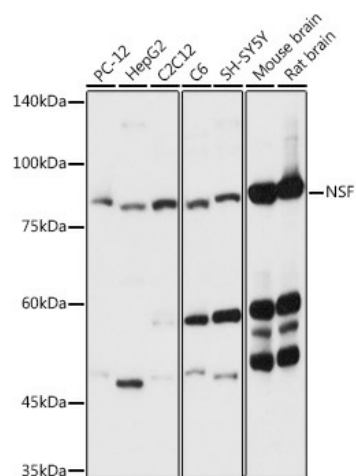
Product data:

Product Type:	Primary Antibodies
Applications:	ELISA, ICC/IF, IP, WB
Recommended Dilution:	WB, 1:1000 - 1:5000 IF/ICC, 1:50 - 1:200 IP, 0.5µg-4µg antibody for 400µg-600µg extracts of whole cells ELISA, Recommended starting concentration is 1 µg/mL. Please optimize the concentration based on your specific assay requirements.
Reactivity:	Human, Mouse, Rat
Modifications:	Unmodified
Host:	Rabbit
Isotype:	IgG
Clonality:	Polyclonal
Formulation:	PBS with 0.09% Sodium azide, 50% glycerol, pH7.3.
Concentration:	lot specific
Purification:	Affinity purification
Conjugation:	Unconjugated
Storage:	Store at -20°C. Avoid freeze / thaw cycles.
Stability:	Shelf life: one year from despatch.
Predicted Protein Size:	83kDa
Gene Name:	N-ethylmaleimide sensitive factor
Database Link:	Entrez Gene 4905 Human P46459
Background:	Enables PDZ domain binding activity and ionotropic glutamate receptor binding activity. Involved in intracellular protein transport; positive regulation of protein catabolic process; and positive regulation of receptor recycling. Located in Golgi apparatus; cytosol; and plasma membrane. Implicated in developmental and epileptic encephalopathy.
Synonyms:	SKD2

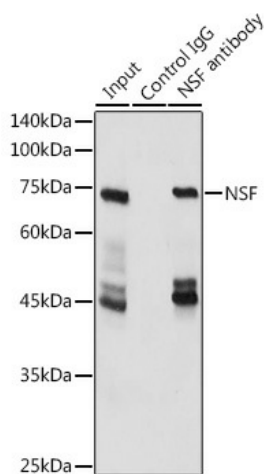


[View online »](#)

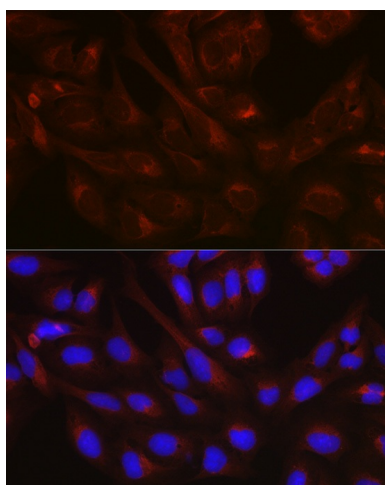
Product images:



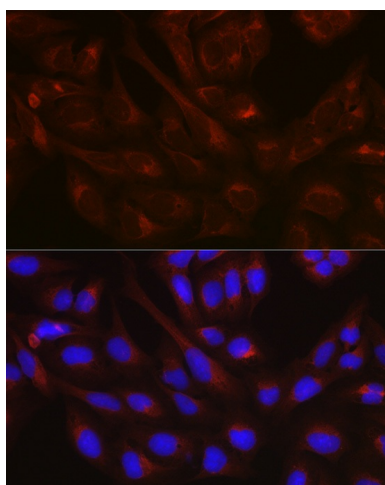
Western blot analysis of various lysates using NSF Rabbit pAb ([TA379328]) at 1:3000 dilution.
 Secondary antibody: HRP-conjugated Goat anti-Rabbit IgG (H+L) (AS014) at 1:10000 dilution.
 Lysates/proteins: 25µg per lane.
 Blocking buffer: 3% nonfat dry milk in TBST.
 Detection: ECL Basic Kit (RM00020).
 Exposure time: 1s.



Immunoprecipitation analysis of 600 µg extracts of Mouse brain cells using 3 µg NSF antibody ([TA379328]). Western blot was performed from the immunoprecipitate using NSF antibody ([TA379328]) at a dilution of 1:3000.



Immunofluorescence analysis of BALB-3T3 cells using NSF Rabbit pAb ([TA379328]) at dilution of 1:100 (40x lens). Secondary antibody: Cy3-conjugated Goat anti-Rabbit IgG (H+L) (AS007) at 1:500 dilution. Blue: DAPI for nuclear staining.



Immunofluorescence analysis of U-2 OS cells using NSF Rabbit pAb ([TA379328]) at dilution of 1:100 (40x lens). Secondary antibody: Cy3-conjugated Goat anti-Rabbit IgG (H+L) (AS007) at 1:500 dilution. Blue: DAPI for nuclear staining.